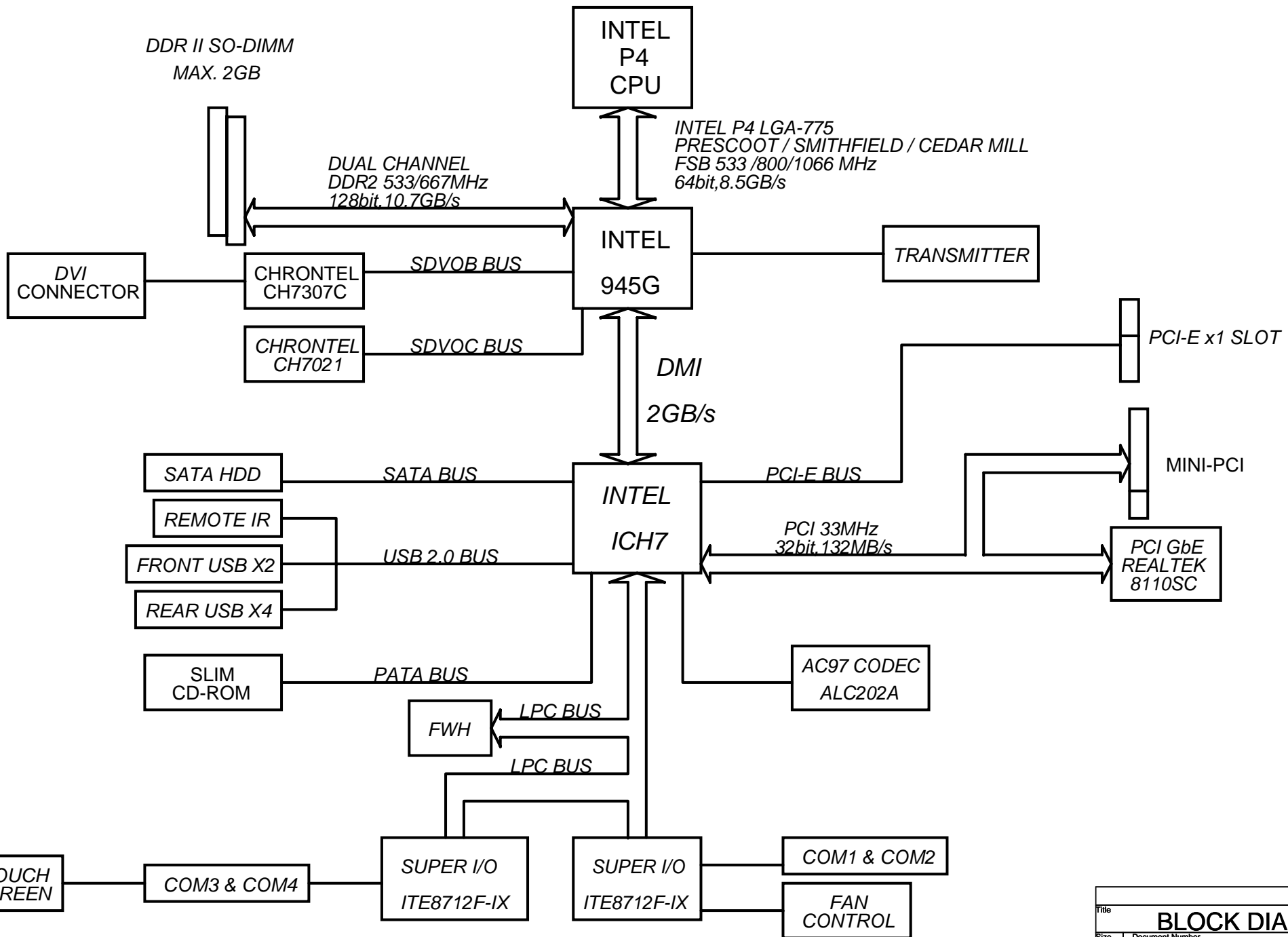
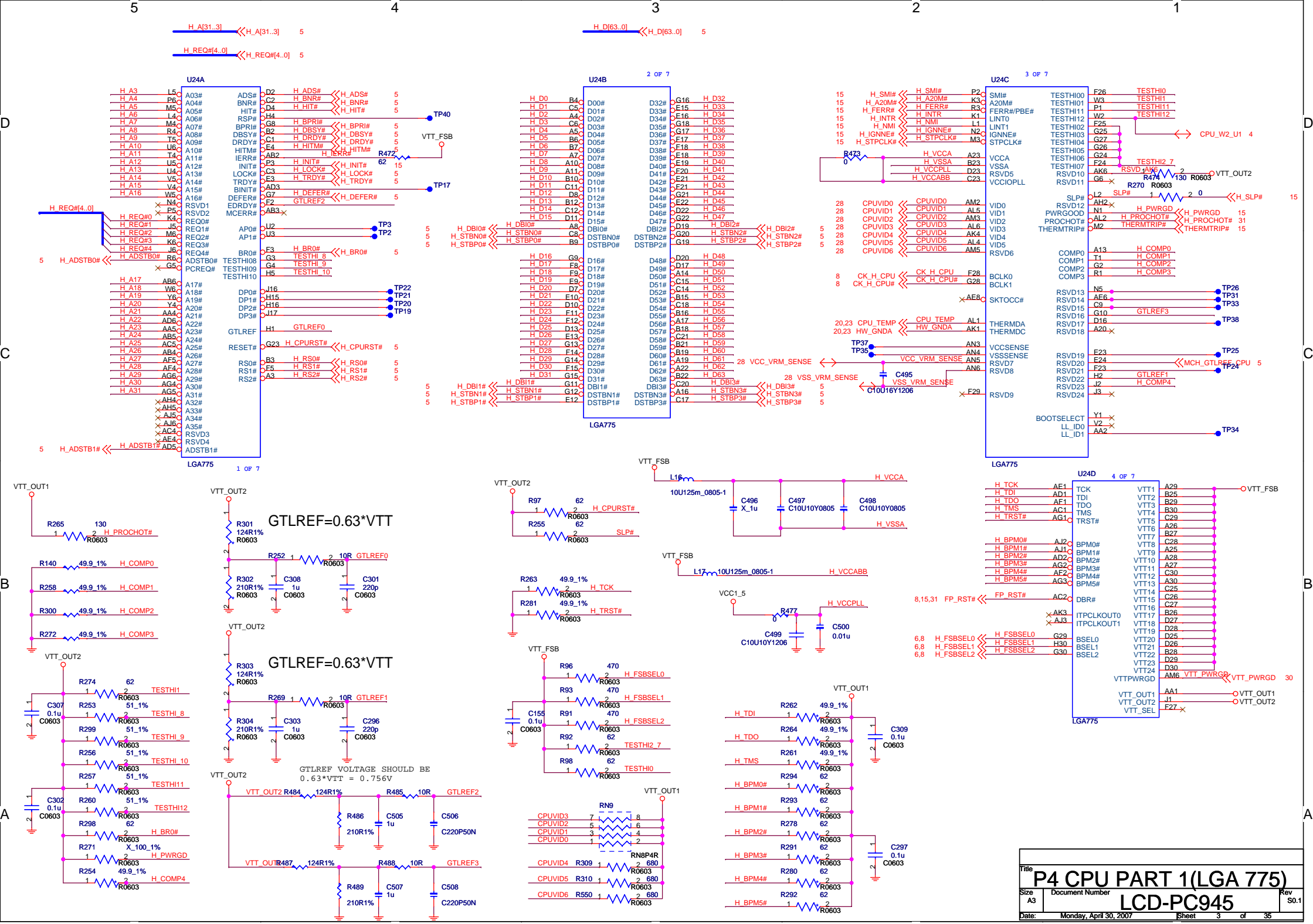


54321

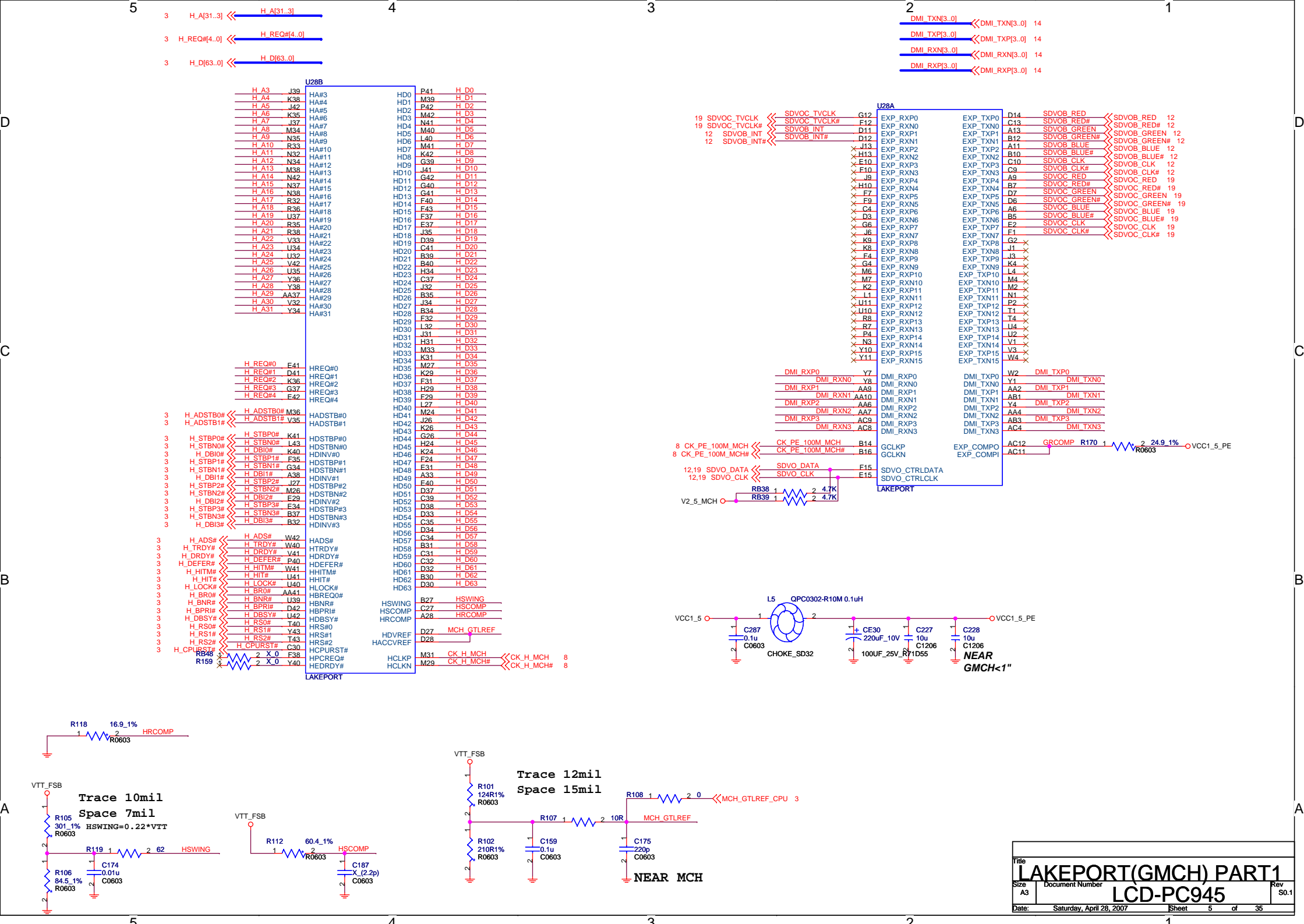
# LCD-PC945 REFERENCE SCHEMATIC

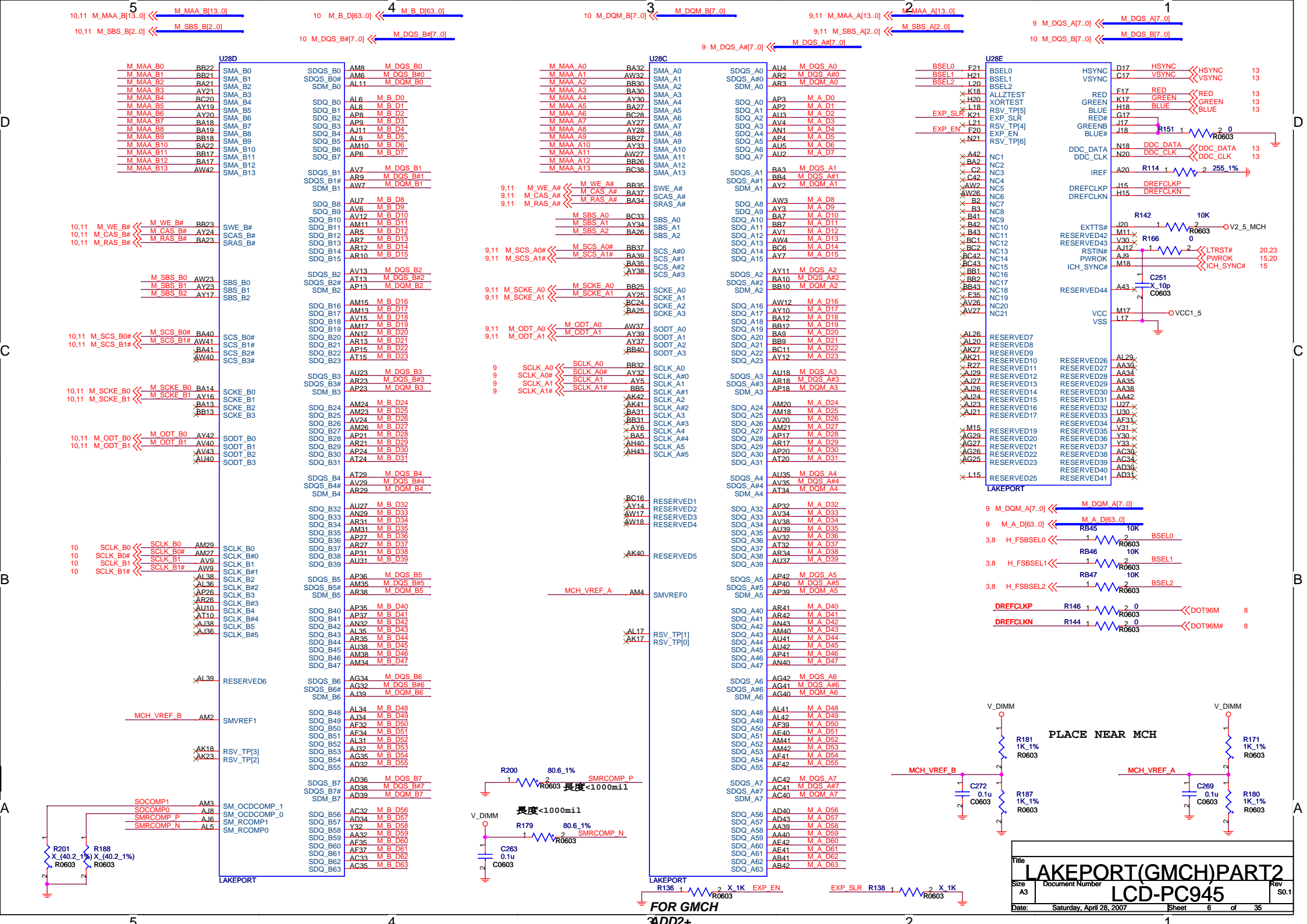
PAGE 01	INDEX SHEET
PAGE 02	BLOCK DIAGRAM
PAGE 03	P4 CPU PART 1(LGA775)
PAGE 04	P4 CPU PART 2(LGA775)
PAGE 05	LAKEPORT(GMCH)PART 1
PAGE 06	LAKEPORT(GMCH)PART 2
PAGE 07	LAKEPORT(GMCH)PART 3
PAGE 08	CLOCK(RTM862-487)
PAGE 09	DDR2 CHANNEL A SO-DIMM
PAGE 10	DDR2 CHANNEL B SO-DIMM
PAGE 11	DDR2 TERMINATION
PAGE 12	CH7307 & DVI CONNECTOR
PAGE 13	VGA CONNECTOR
PAGE 14	ICH7 PART 1
PAGE 15	ICH7 PART 2
PAGE 16	ICH7 PART 3
PAGE 17	IDE & SATA
PAGE 18	MINI PCI/VCC/VCC3
PAGE 19	CH7021
PAGE 20	LPC SIO 1
PAGE 21	LPC SIO 2
PAGE 22	COM PORT
PAGE 23	FWH & H/W MONITOR & FAN CTL
PAGE 24	PCI GIGALAN(RTL8110S)
PAGE 25	USB & RJ-45 CONNECTOR
PAGE 26	AC97 CDEC(ALC202A)
PAGE 27	AUDIO CONNECTOR
PAGE 28	CPU VCORE(VRD10.1)
PAGE 29	DISCRETE POWER 1
PAGE 30	DISCRETE POWER 2
PAGE 31	PCI-E SLOT & FPT
PAGE 32	TRANSMITTER
PAGE 33	PANEL DC-DC POWER



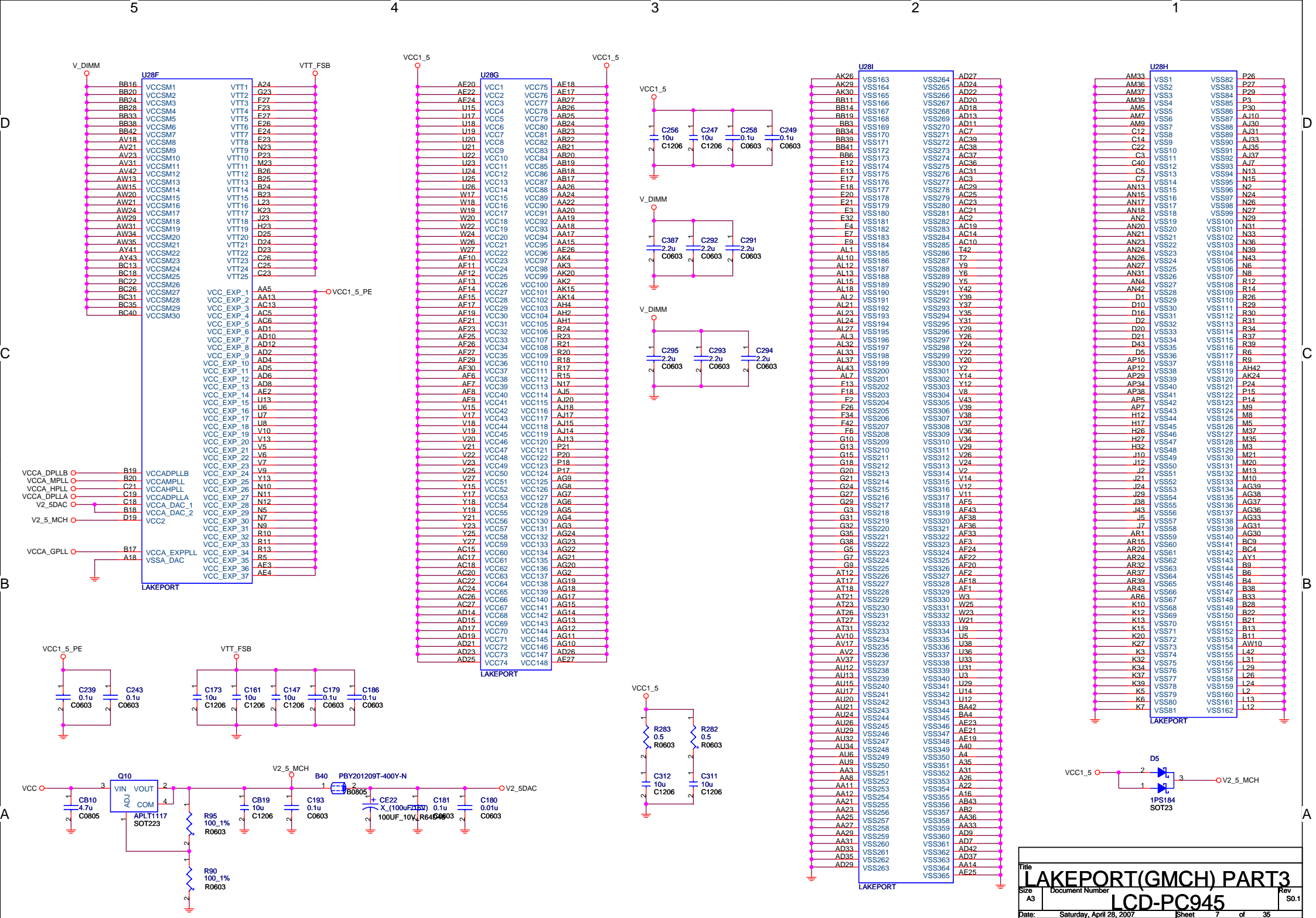


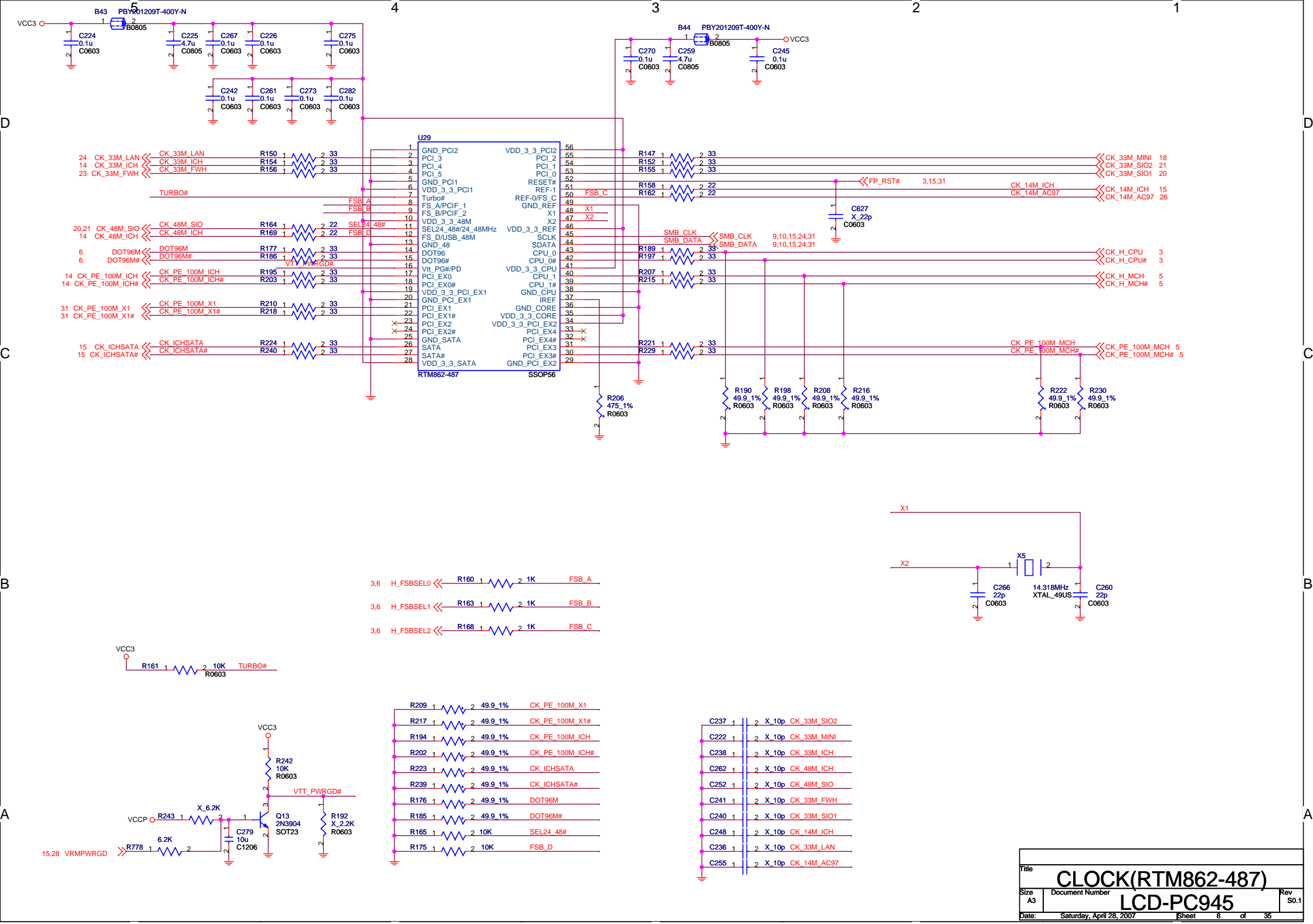














6,11 M\_MAA\_A[13..0] << M\_MAA\_A[13..0]  
6 M\_A\_D[63..0] << M\_A\_D[63..0]  
6 M\_DQS\_A[7..0] << M\_DQS\_A[7..0]  
6 M\_DQS\_A# [7..0] << M\_DQS\_A# [7..0]  
6 M\_DQM\_A[7..0] << M\_DQM\_A[7..0]  
6,11 M\_SBS\_A[2..0] << M\_SBS\_A[2..0]

M\_MAA\_A0 102 A0  
M\_MAA\_A1 101 A1  
M\_MAA\_A2 100 A2  
M\_MAA\_A3 99 A3  
M\_MAA\_A4 98 A4  
M\_MAA\_A5 97 A5  
M\_MAA\_A6 94 A6  
M\_MAA\_A7 92 A7  
M\_MAA\_A8 93 A8  
M\_MAA\_A9 91 A9  
M\_MAA\_A10 105 A10/AP  
M\_MAA\_A11 90 A11  
M\_MAA\_A12 89 A12  
M\_MAA\_A13 116 A13  
X 86 A14  
X 84 A15  
M\_SBS\_A2 85 A16/BA2

6,11 M\_SCS\_A0# M\_SCS\_A0#  
6,11 M\_SCS\_A1# M\_SCS\_A1#  
6 SCLK\_A1 SCLK\_A1#  
6 SCLK\_A0 SCLK\_A0#  
6 SCLK\_A0# SCLK\_A0#  
6,11 M\_SCKE\_A0 M\_SCKE\_A0  
6,11 M\_SCKE\_A1 M\_SCKE\_A1  
6,11 M\_CAS\_A# M\_CAS\_A#  
6,11 M\_RAS\_A# M\_RAS\_A#  
6,11 M\_WE\_A# M\_WE\_A#

8,10,15,24,31 SMB\_CLK SMB\_CLK  
8,10,15,24,31 SMB\_DATA SMB\_DATA

6,11 M\_ODT\_A0 M\_ODT\_A0  
6,11 M\_ODT\_A1 M\_ODT\_A1

M\_DQM\_A0 10 DM0  
M\_DQM\_A1 26 DM1  
M\_DQM\_A2 52 DM2  
M\_DQM\_A3 67 DM3  
M\_DQM\_A4 130 DM4  
M\_DQM\_A5 147 DM5  
M\_DQM\_A6 170 DM6  
M\_DQM\_A7 185 DM7

M\_DQS\_A0 13 DQS0  
M\_DQS\_A#0 11 DQS#0

M\_DQS\_A1 31 DQS1  
M\_DQS\_A#1 29 DQS#1

M\_DQS\_A2 51 DQS2  
M\_DQS\_A#2 49 DQS#2

M\_DQS\_A3 70 DQS3  
M\_DQS\_A#3 68 DQS#3

M\_DQS\_A4 131 DQS4  
M\_DQS\_A#4 129 DQS#4

M\_DQS\_A5 148 DQS5  
M\_DQS\_A#5 146 DQS#5

M\_DQS\_A6 169 DQS6  
M\_DQS\_A#6 167 DQS#6

M\_DQS\_A7 188 DQS7  
M\_DQS\_A#7 186 DQS#7

DDR2\_SODIMM\_200P

DDR1A

DQ0 5 M\_A\_D4  
DQ1 7 M\_A\_D5  
DQ2 17 M\_A\_D6  
DQ3 19 M\_A\_D7  
DQ4 4 M\_A\_D1  
DQ5 6 M\_A\_D0  
DQ6 14 M\_A\_D2  
DQ7 23 M\_A\_D12  
DQ8 25 M\_A\_D13  
DQ9 35 M\_A\_D10  
DQ10 37 M\_A\_D11  
DQ11 20 M\_A\_D9  
DQ12 22 M\_A\_D8  
DQ13 36 M\_A\_D14  
DQ14 38 M\_A\_D15  
DQ15 43 M\_A\_D20  
DQ16 45 M\_A\_D21  
DQ17 55 M\_A\_D19  
DQ18 57 M\_A\_D18  
DQ19 44 M\_A\_D17  
DQ20 46 M\_A\_D16  
DQ21 56 M\_A\_D23  
DQ22 58 M\_A\_D22  
DQ23 61 M\_A\_D29  
DQ24 63 M\_A\_D28  
DQ25 73 M\_A\_D30  
DQ26 75 M\_A\_D31  
DQ27 62 M\_A\_D24  
DQ28 64 M\_A\_D25  
DQ29 74 M\_A\_D27  
DQ30 76 M\_A\_D26  
DQ31 123 M\_A\_D32  
DQ32 125 M\_A\_D33  
DQ33 135 M\_A\_D34  
DQ34 137 M\_A\_D35  
DQ35 124 M\_A\_D36  
DQ36 126 M\_A\_D37  
DQ37 134 M\_A\_D38  
DQ38 136 M\_A\_D39  
DQ39 141 M\_A\_D43  
DQ40 143 M\_A\_D42  
DQ41 151 M\_A\_D45  
DQ42 153 M\_A\_D44  
DQ43 140 M\_A\_D47  
DQ44 142 M\_A\_D40  
DQ45 154 M\_A\_D41  
DQ46 157 M\_A\_D48  
DQ47 159 M\_A\_D49  
DQ48 173 M\_A\_D50  
DQ49 175 M\_A\_D51  
DQ50 158 M\_A\_D52  
DQ51 180 M\_A\_D53  
DQ52 174 M\_A\_D54  
DQ53 176 M\_A\_D55  
DQ54 179 M\_A\_D56  
DQ55 181 M\_A\_D57  
DQ56 189 M\_A\_D58  
DQ57 191 M\_A\_D59  
DQ58 180 M\_A\_D60  
DQ59 182 M\_A\_D61  
DQ60 192 M\_A\_D62  
DQ61 194 M\_A\_D63  
DQ62  
DQ63

DDR2\_200  
SL\_SODDR200-9659

DDR1B

VSS\_1 18  
VSS\_2 24  
VSS\_3 41  
VSS\_4 53  
VSS\_5 42  
VSS\_6 54  
VSS\_7 59  
VSS\_8 65  
VSS\_9 66  
VSS\_10 127  
VSS\_11 128  
VSS\_12 139  
VSS\_13 129  
VSS\_14 145  
VSS\_15 165  
VSS\_16 172  
VSS\_17 177  
VSS\_18 178  
VSS\_19 187  
VSS\_20 178  
VSS\_21 190  
VSS\_22 9  
VSS\_23 33  
VSS\_24 155  
VSS\_25 155  
VSS\_26 34  
VSS\_27 132  
VSS\_28 144  
VSS\_29 156  
VSS\_30 168  
VSS\_31 2  
VSS\_32 3  
VSS\_33 15  
VSS\_34 27  
VSS\_35 149  
VSS\_36 161  
VSS\_37 28  
VSS\_38 39  
VSS\_39 40  
VSS\_40 138  
VSS\_41 150  
VSS\_42 162

DDR2\_SODIMM\_200P

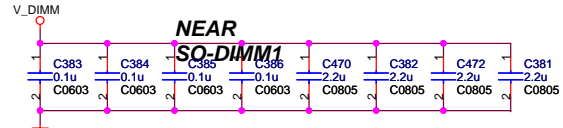
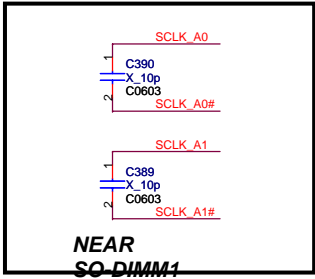
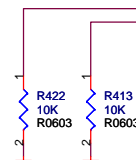
DDR2\_200  
SL\_SODDR200-9659

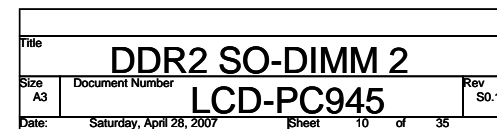
V\_DIMM

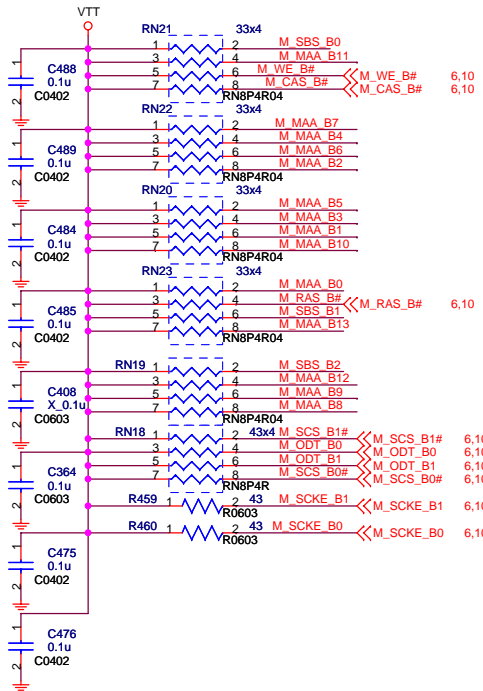
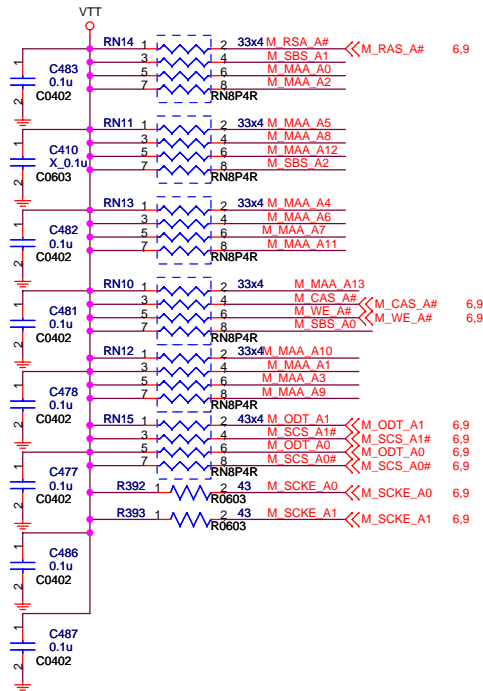
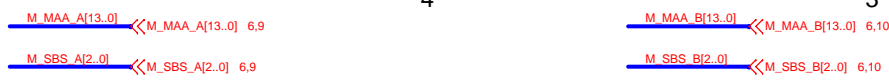
VDD\_1 112  
VDD\_2 111  
VDD\_3 117  
VDD\_4 96  
VDD\_5 95  
VDD\_6 118  
VDD\_7 81  
VDD\_8 82  
VDD\_9 103  
VDD\_10 87  
VDD\_11 88  
VDD\_12 104  
VDDSP0 199  
NC1 83  
NC2 120  
NC3 50  
NC4 69  
NCTEST 163  
VREF 1  
GND0 201  
GND1 202  
VSS\_64 47  
VSS\_63 133  
VSS\_62 183  
VSS\_61 77  
VSS\_60 12  
VSS\_59 48  
VSS\_58 184  
VSS\_57 78  
VSS\_56 71  
VSS\_55 72  
VSS\_54 121  
VSS\_53 122  
VSS\_52 196  
VSS\_51 193  
VSS\_50 8

C430 X 0.1u C0603  
C439 2.2u C0805

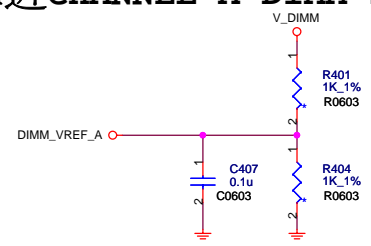
C396 0.1u C0603  
C394 2.2u C0805



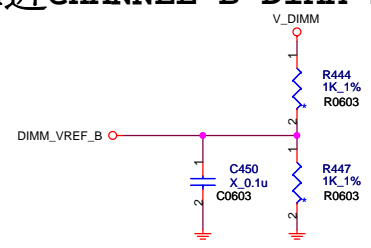




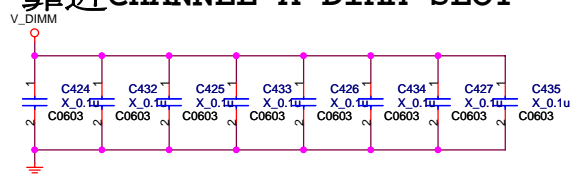
## 靠近CHANNEL A DIMM SLOT



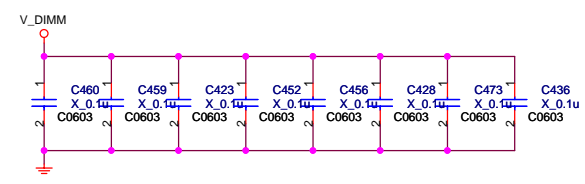
## 靠近CHANNEL B DIMM SLOT



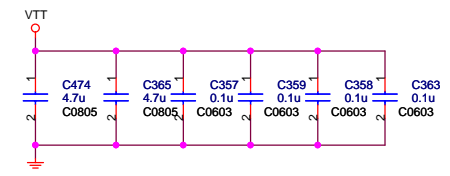
## 靠近CHANNEL A DIMM SLOT



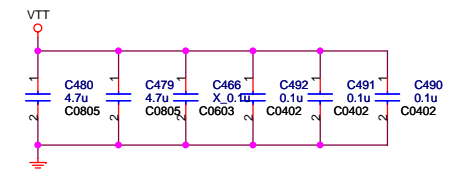
## 靠近CHANNEL B DIMM SLOT



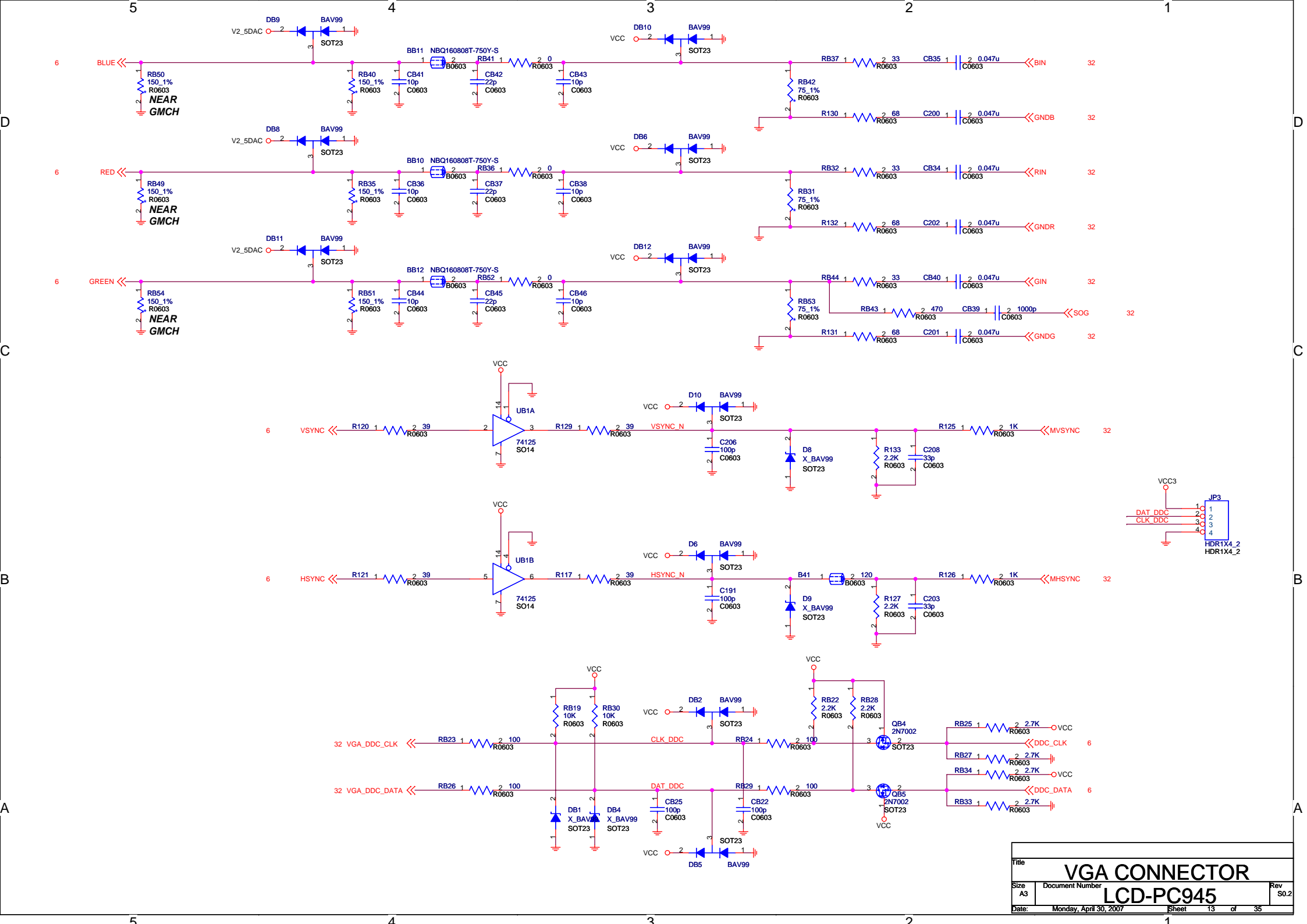
## 靠近CHANNEL A VTT ISLAND

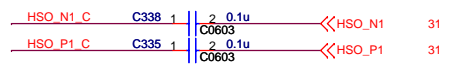
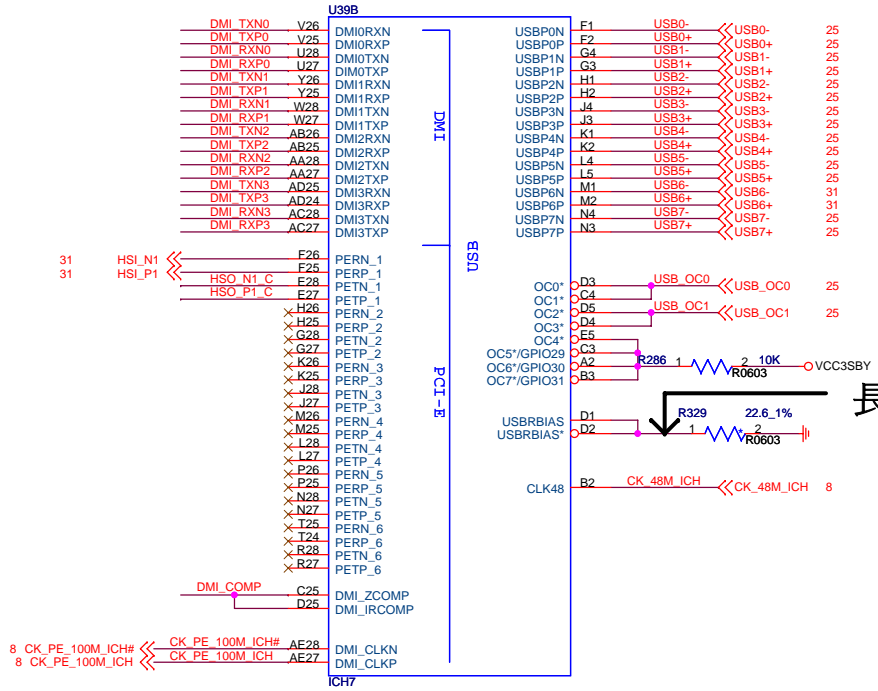
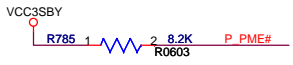
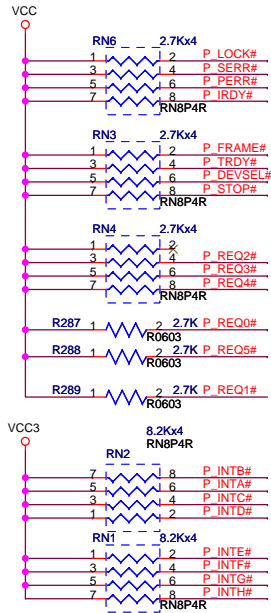
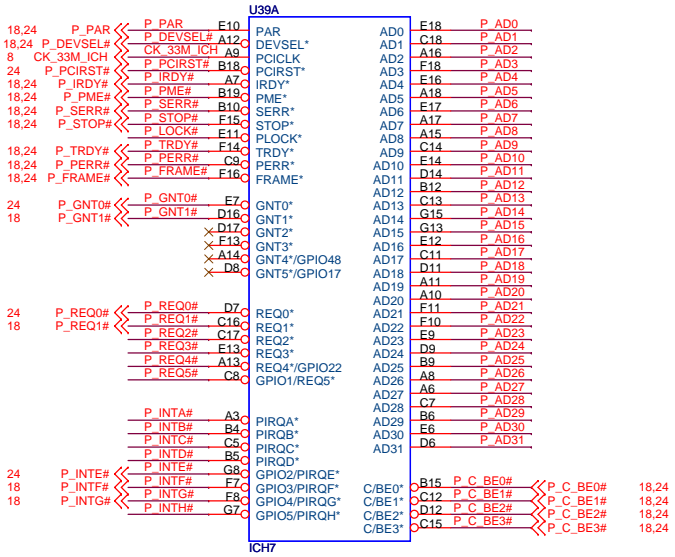


## 靠近CHANNEL B VTT ISLAND

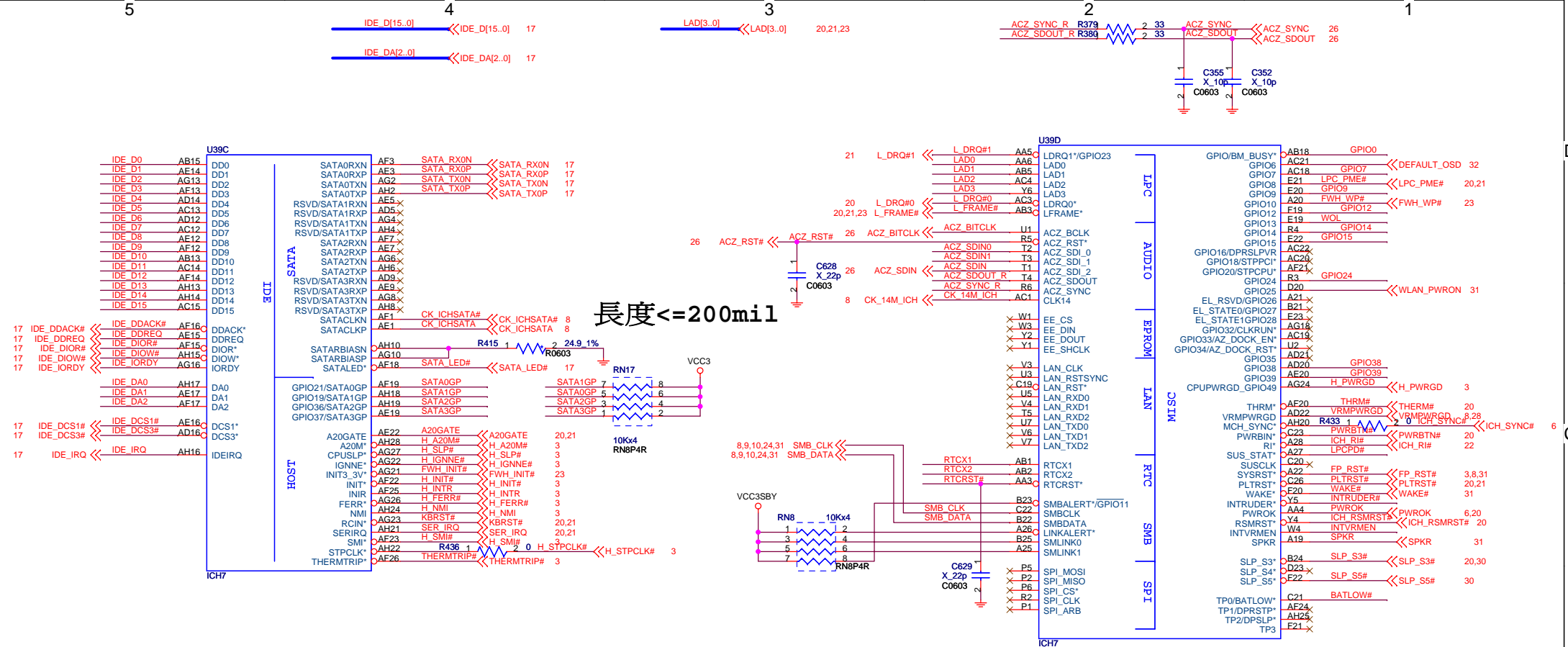




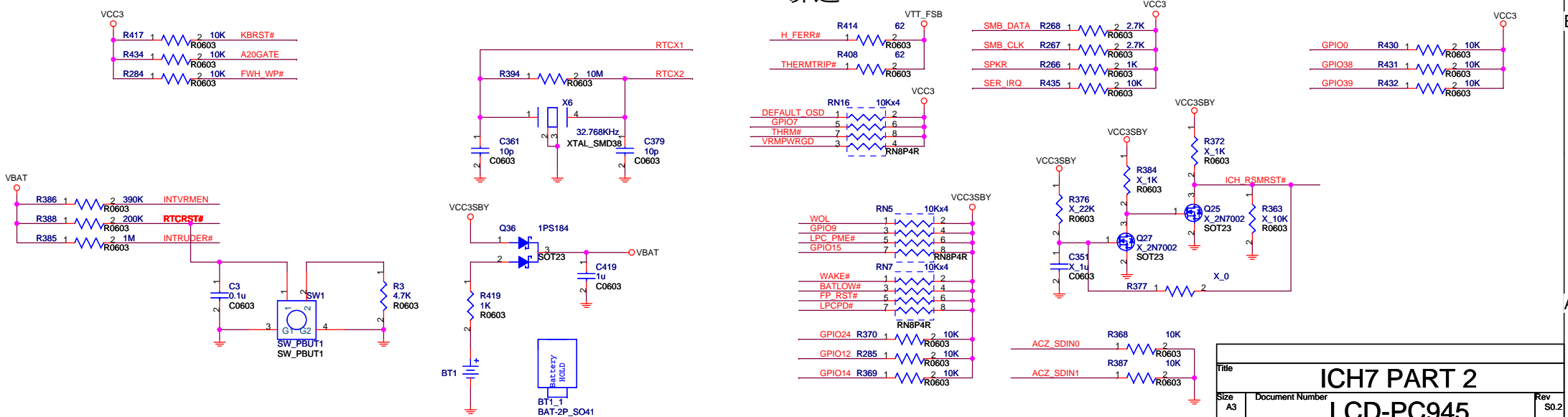




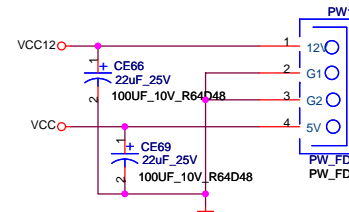
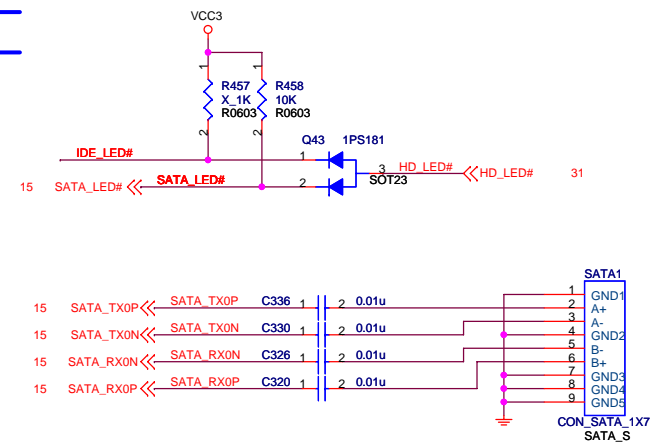
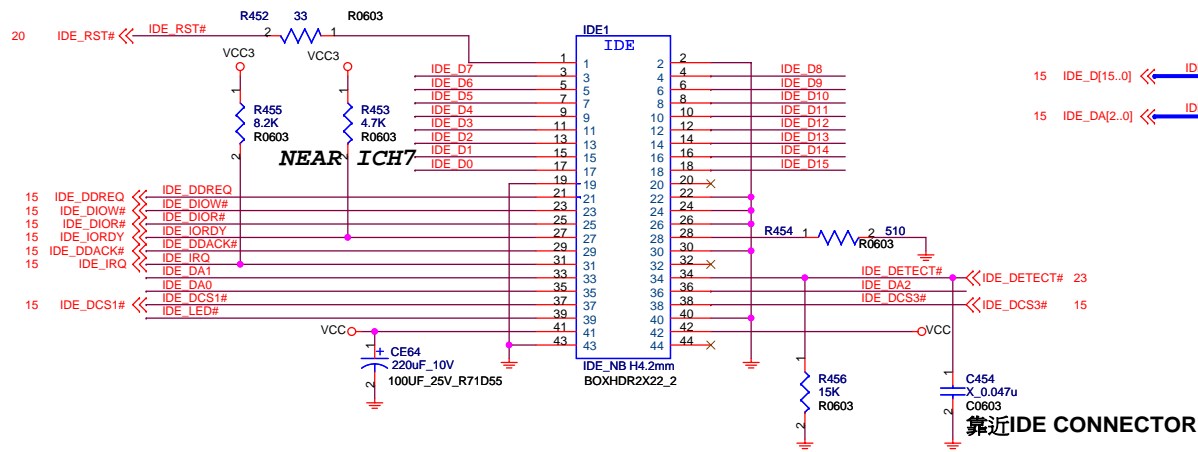




## 靠近ICH7

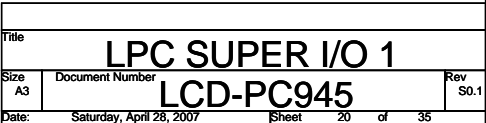






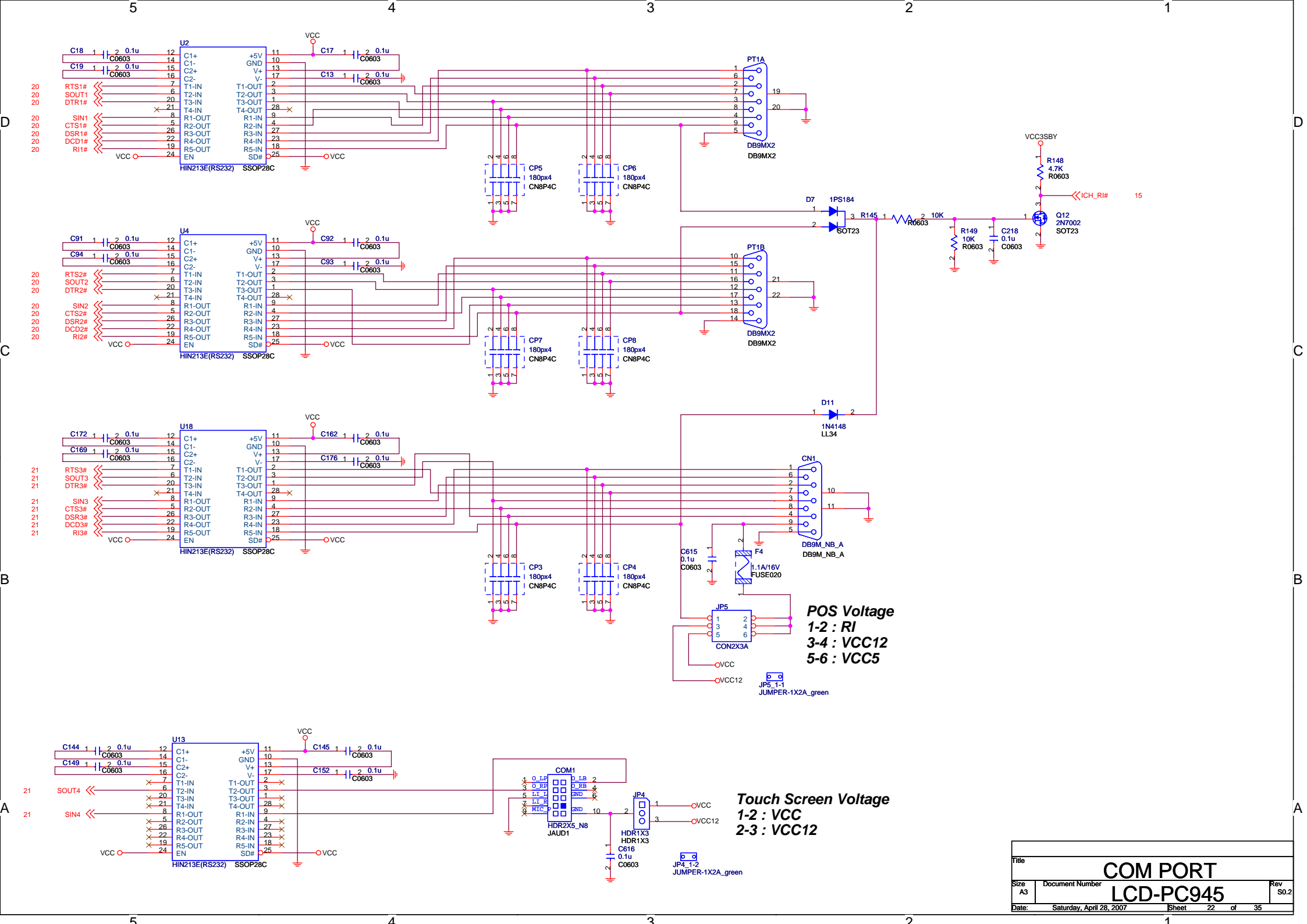




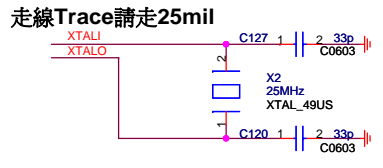
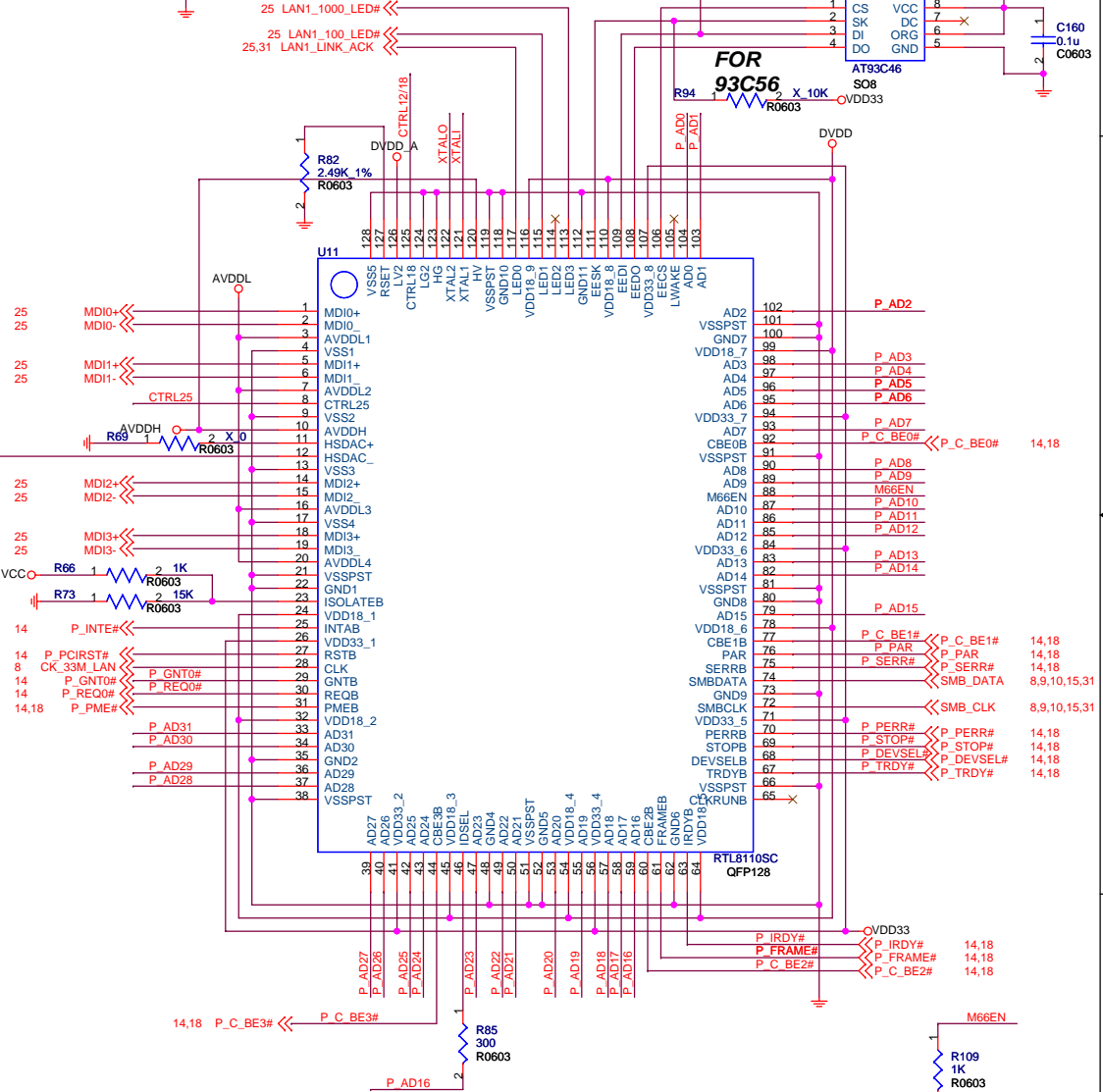
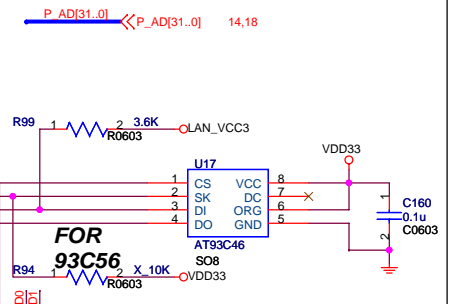
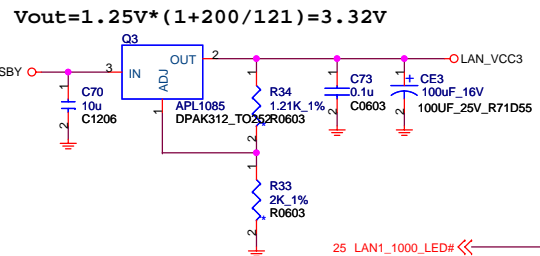
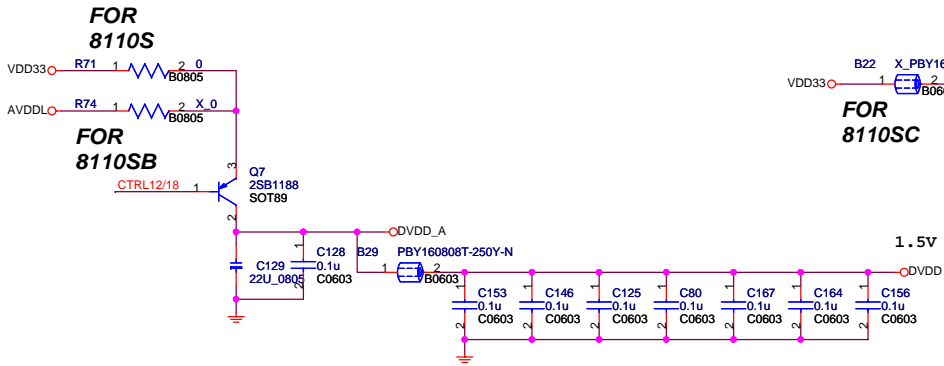
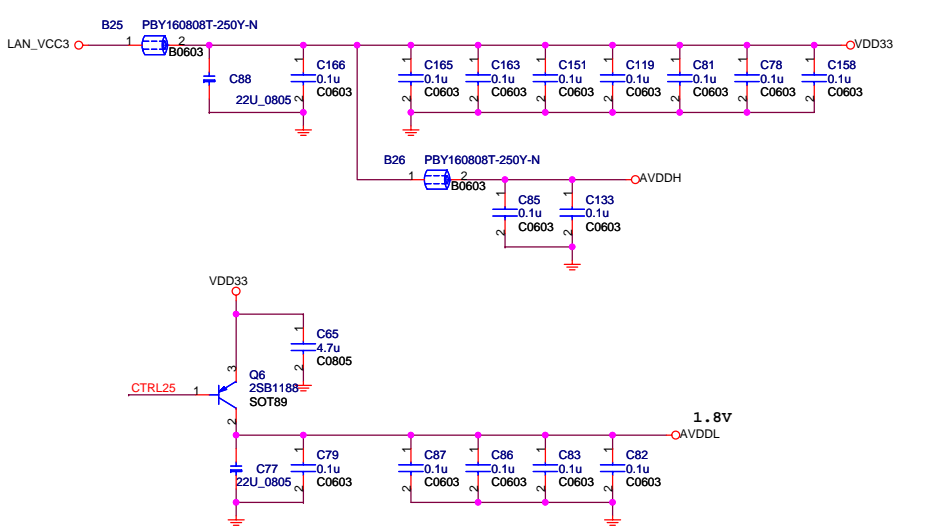




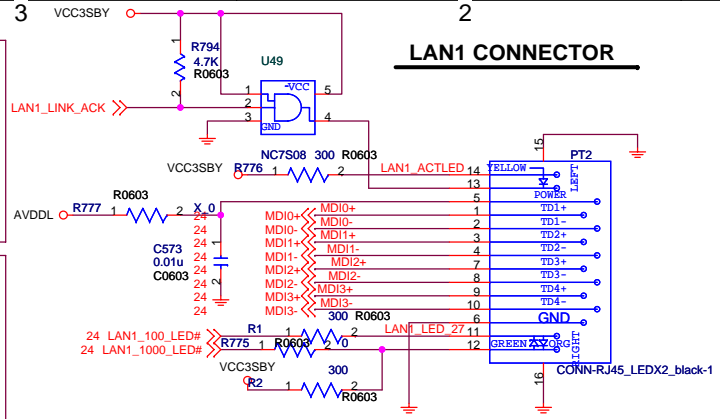
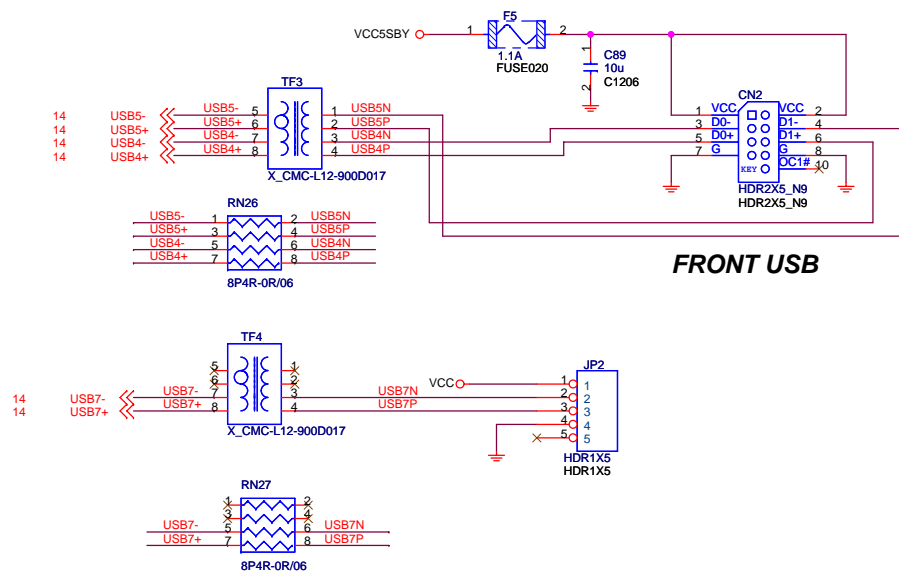
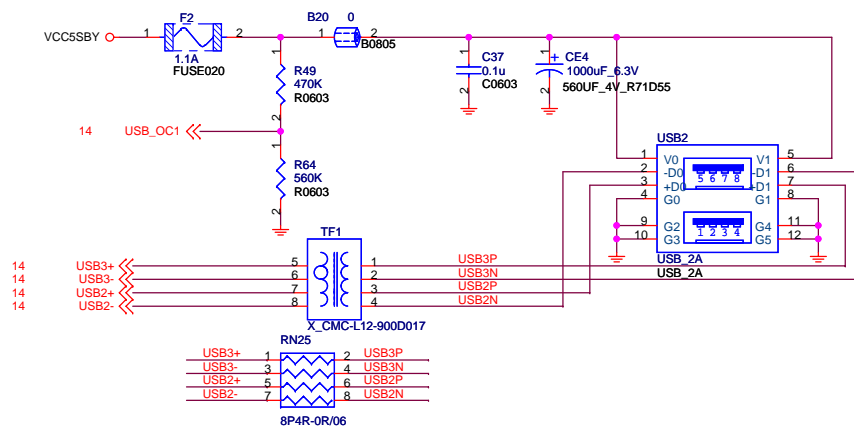
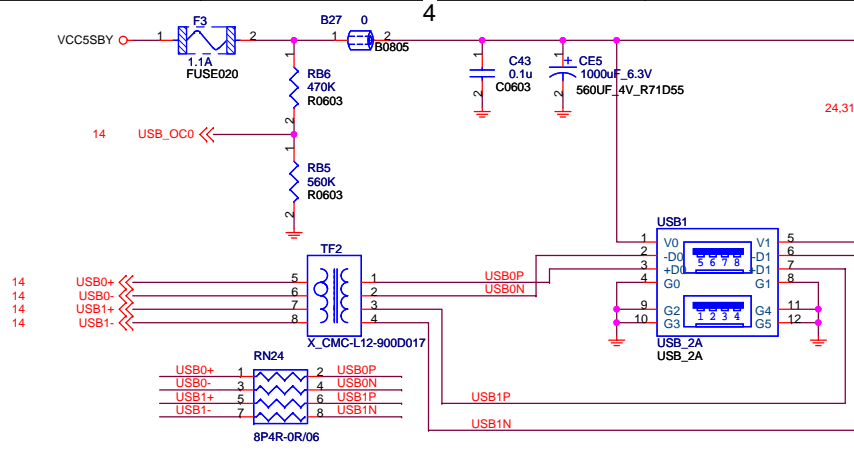




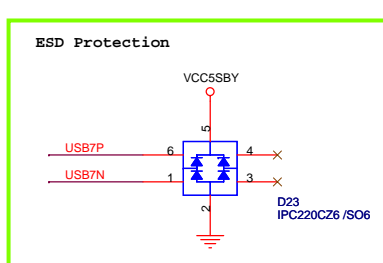
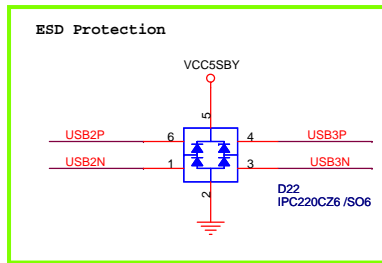
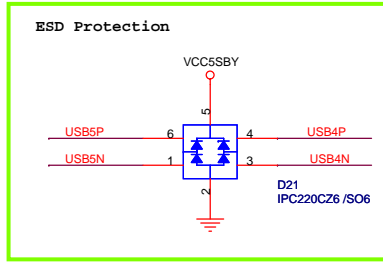
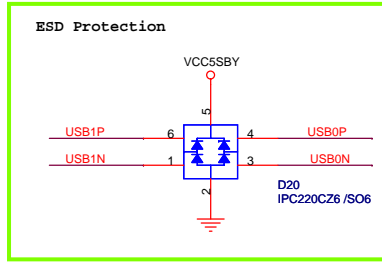
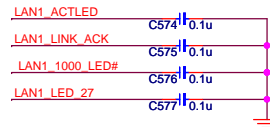




Title			PCI LAN(RTL8110SB)
Size	Document Number	LCD-PC945	
A3		Rev	S0.1
Date:	Saturday, April 28, 2007	Sheet	24 of 35



Giga-LAN		10/100-LAN	
N58-14F0051-S42		N58-14F0051-S42	
Link	Green	Link	Yellow
Active	Blinking	Active	Blinking
1000	Yellow	100	Green
100	Green	10	None
10	None		



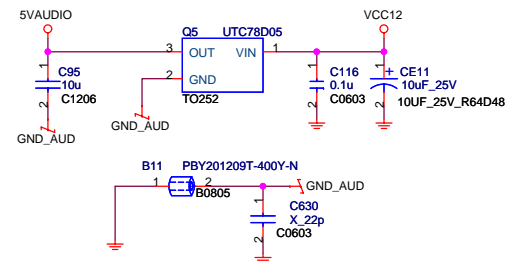
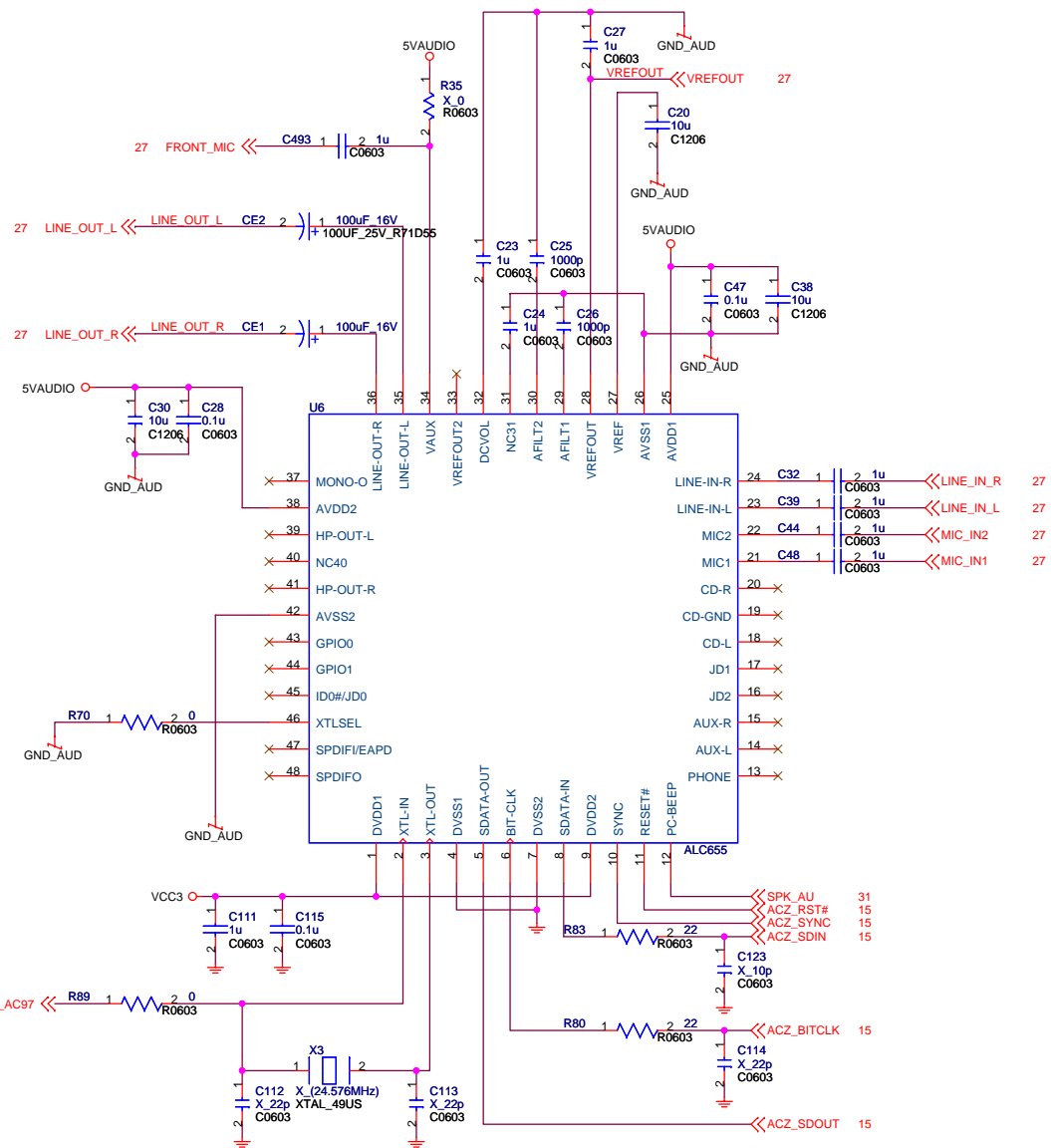
5

4

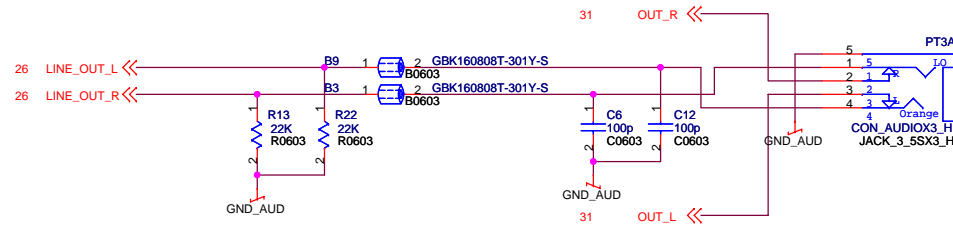
3

2

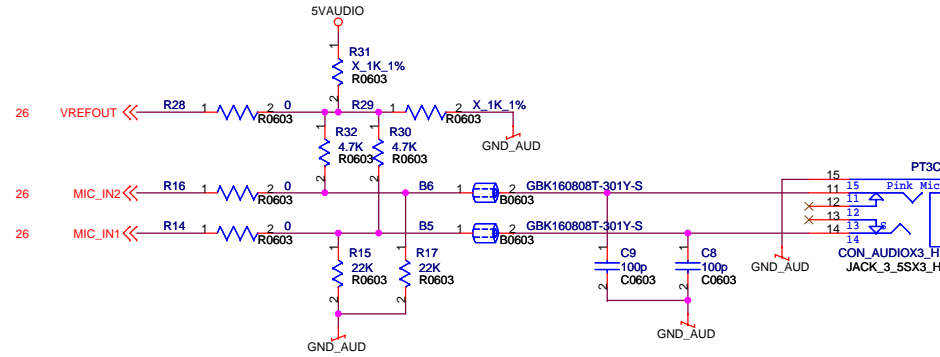
1



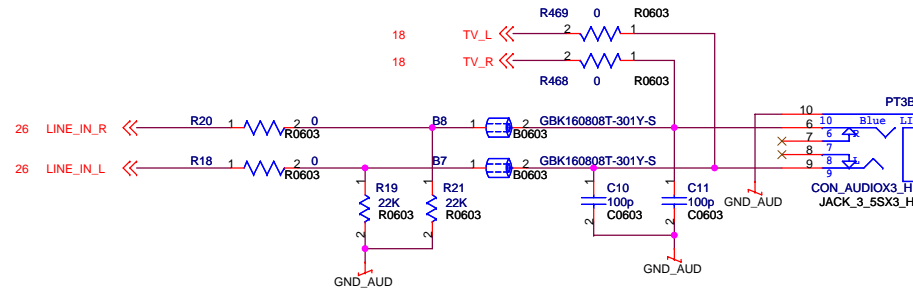




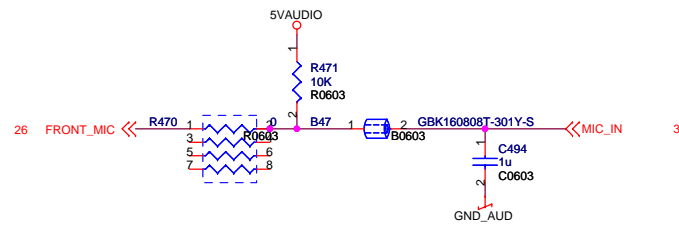
**LINE-OUT**



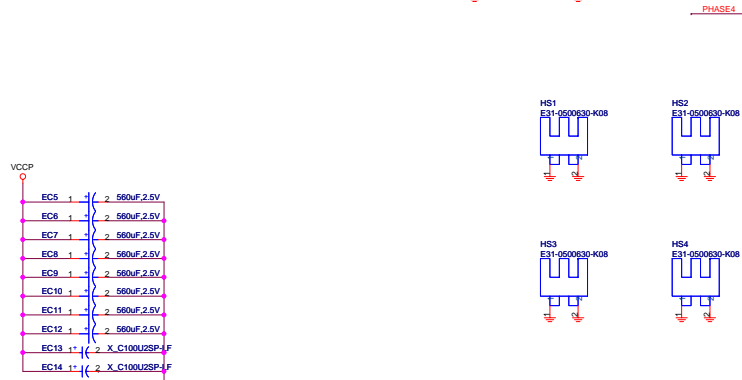
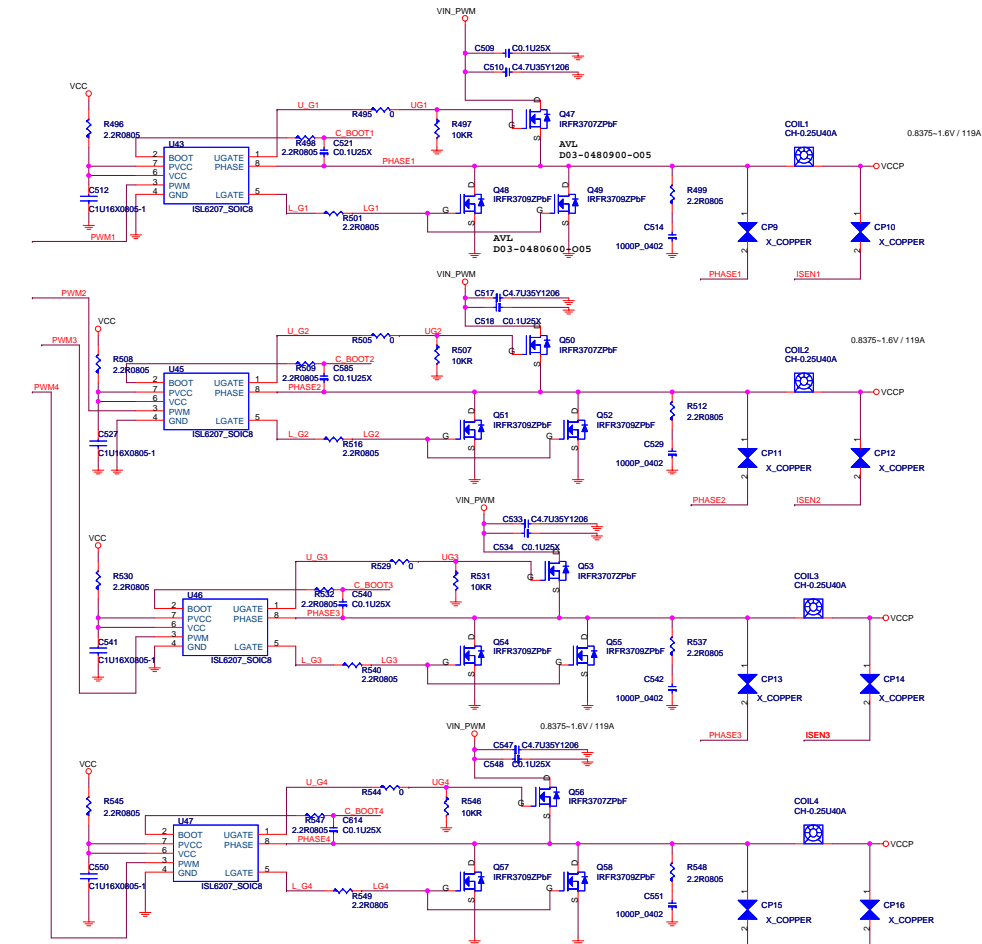
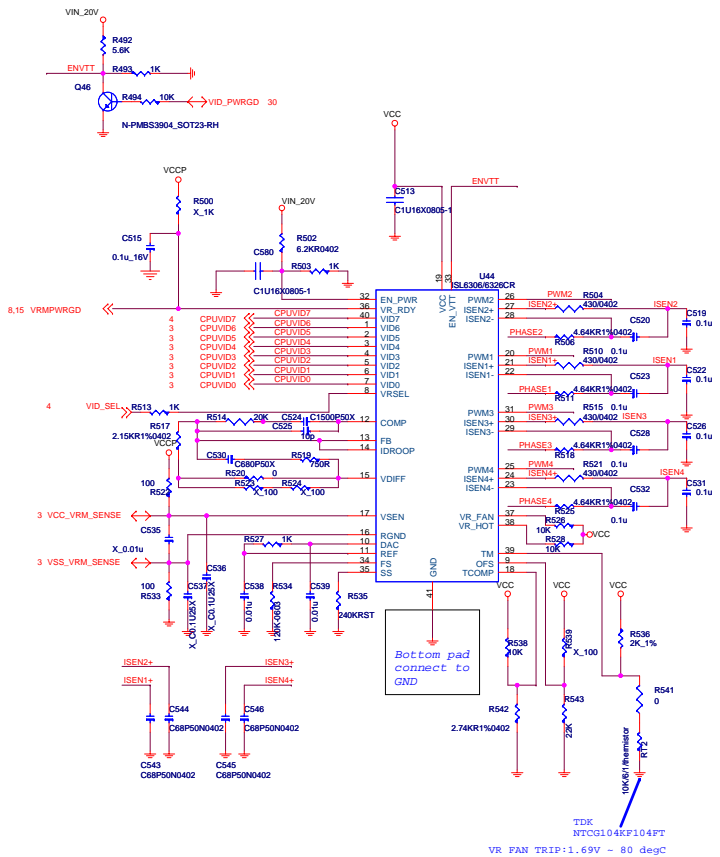
**MIC-IN**



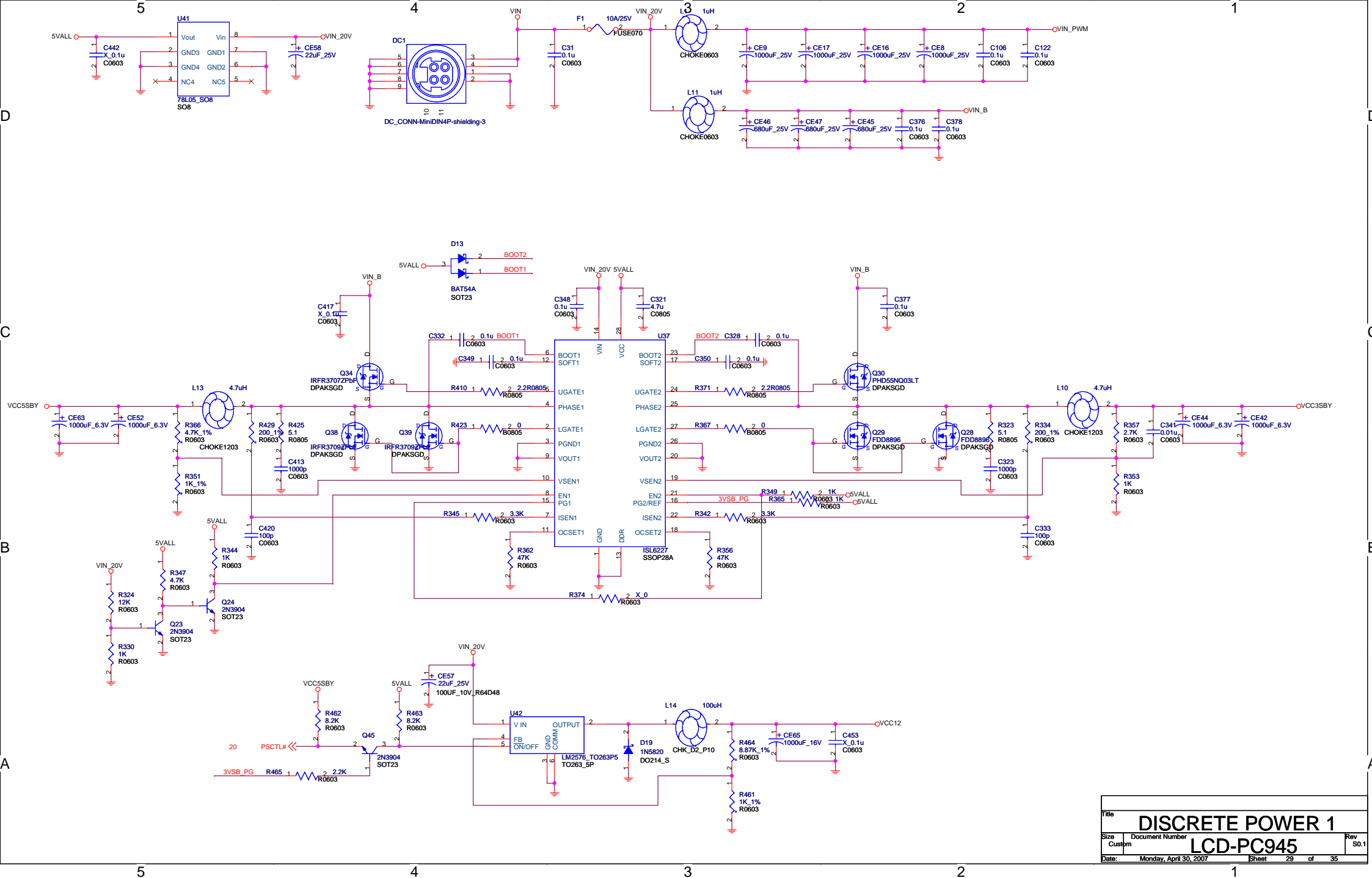
**LINE-IN**

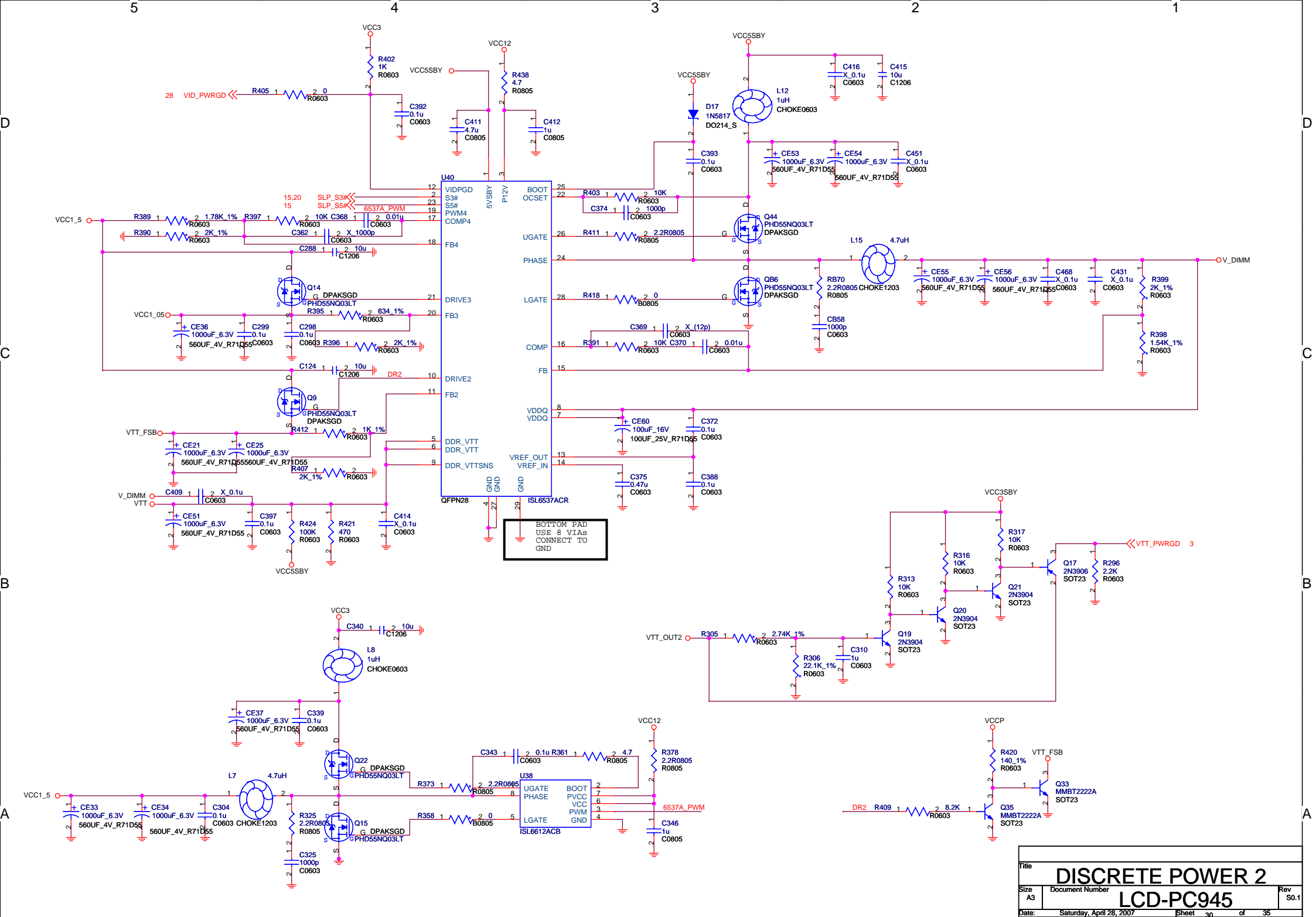


Title			AUDIO CONNECTOR	
Size	Document Number		LCD-PC945	
A3			Rev S0.2	
Date:	Saturday, May 12, 2007		Sheet	27 of 35

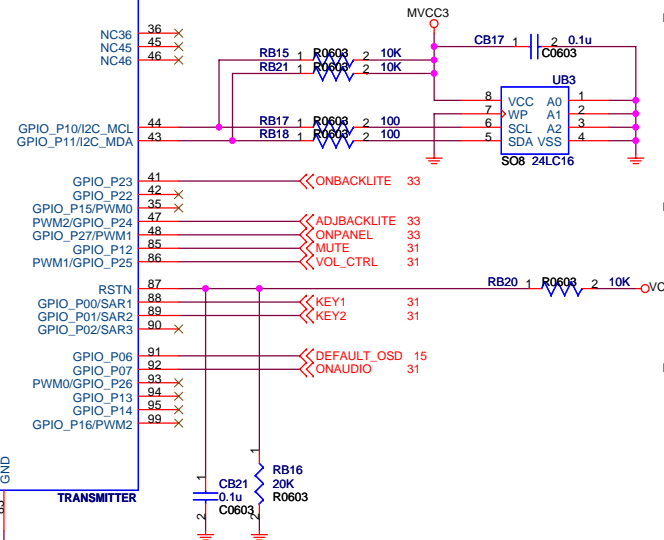
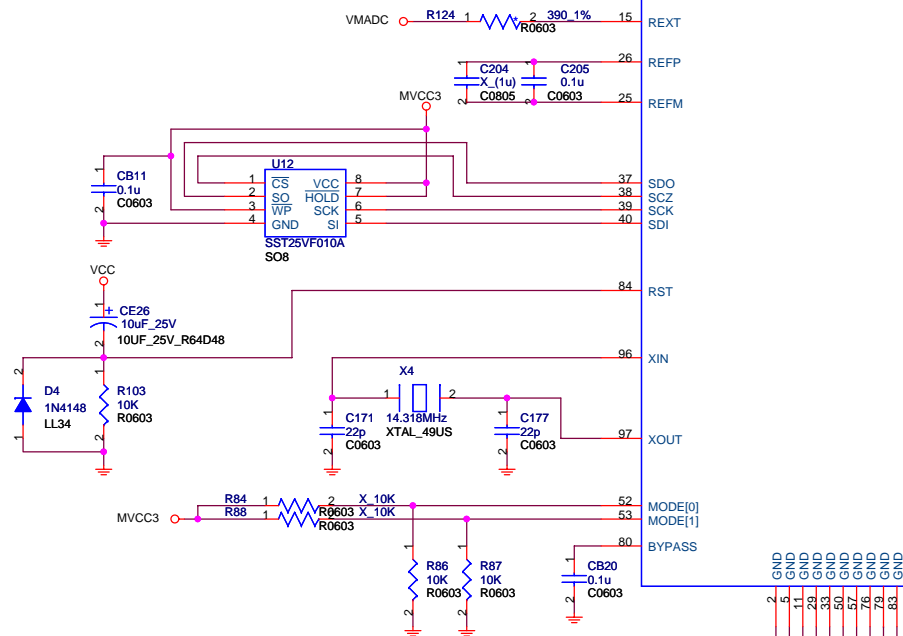
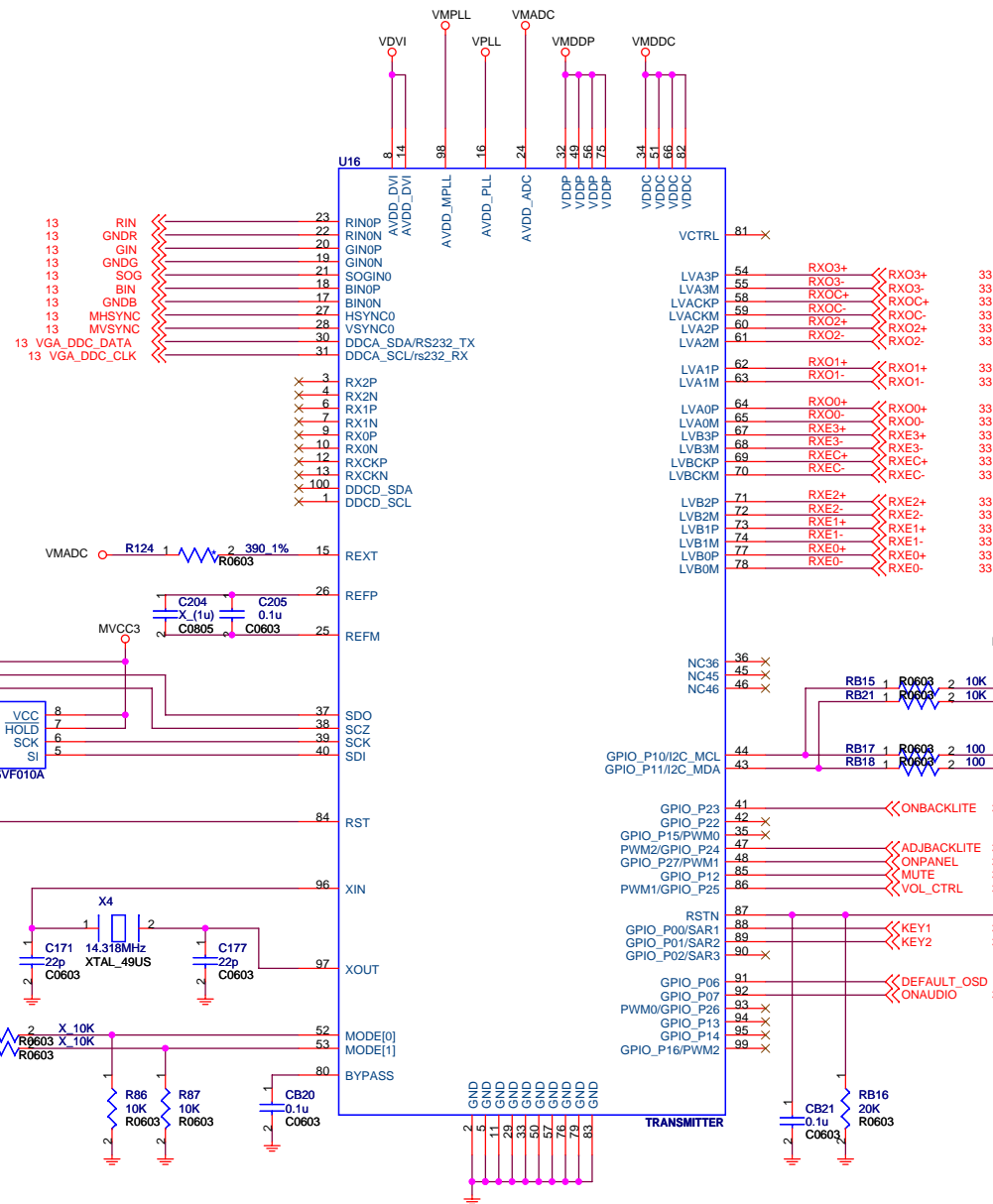
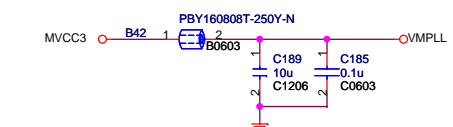
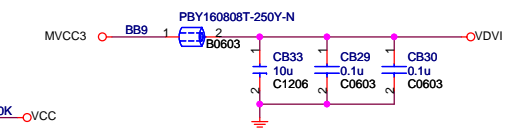
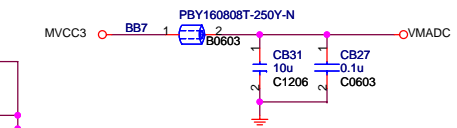
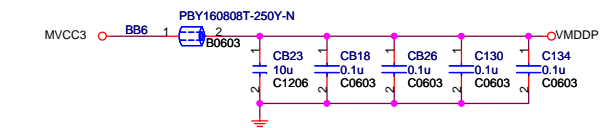
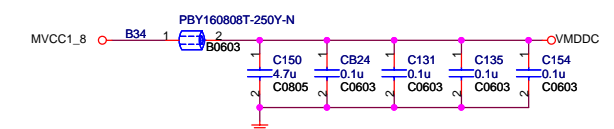
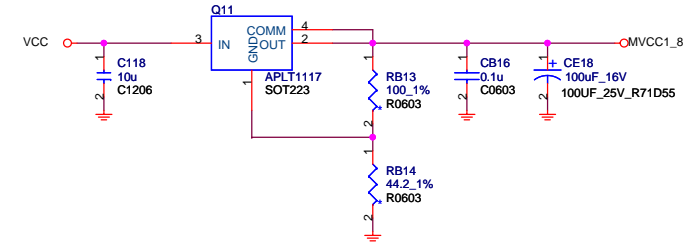
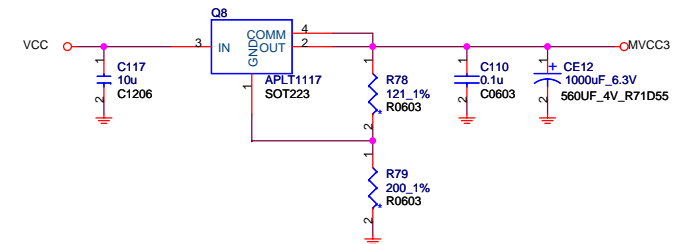
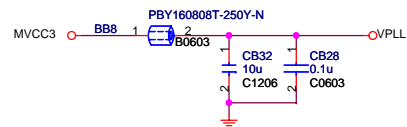


Title <Title>			
Size A2	Document Number <Doc>	Rev <Rev Code>	
Date:	Monday, April 30, 2007	Sheet	28 of 35



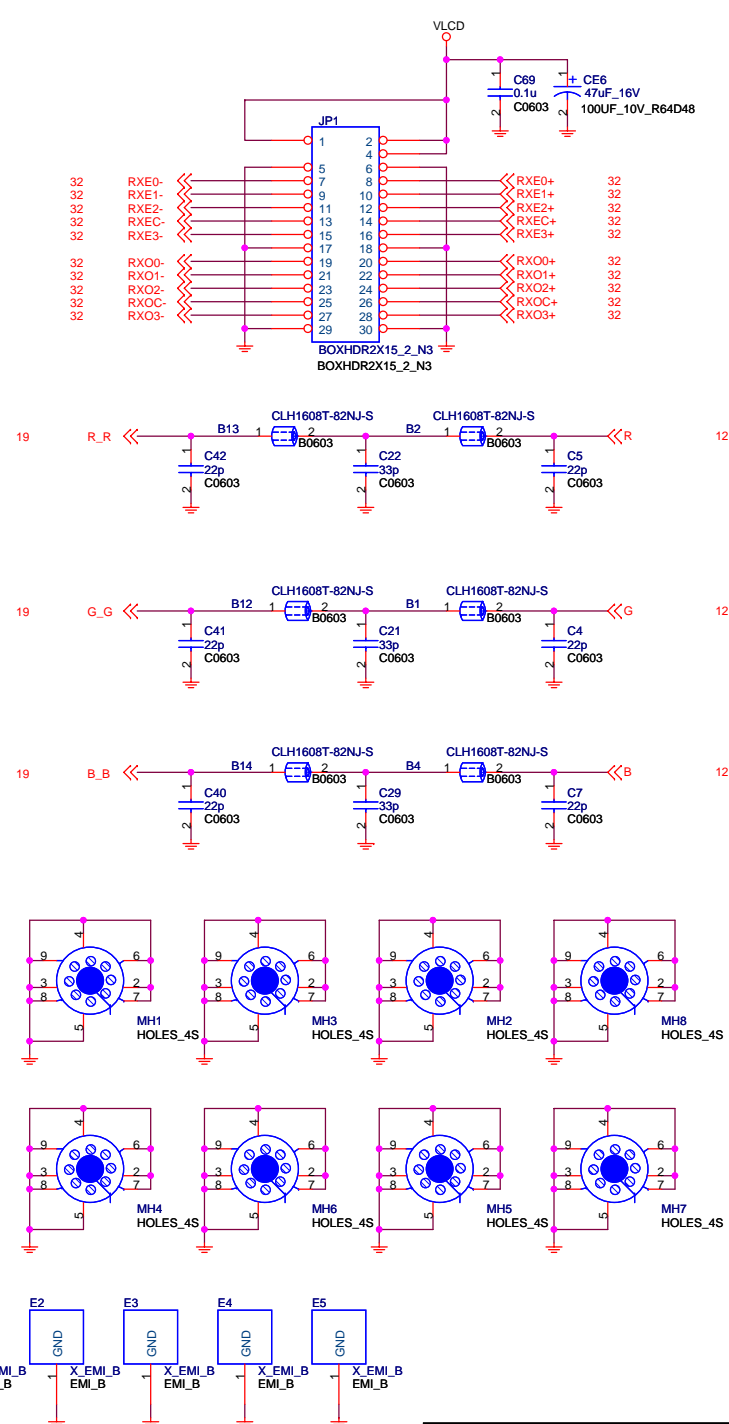
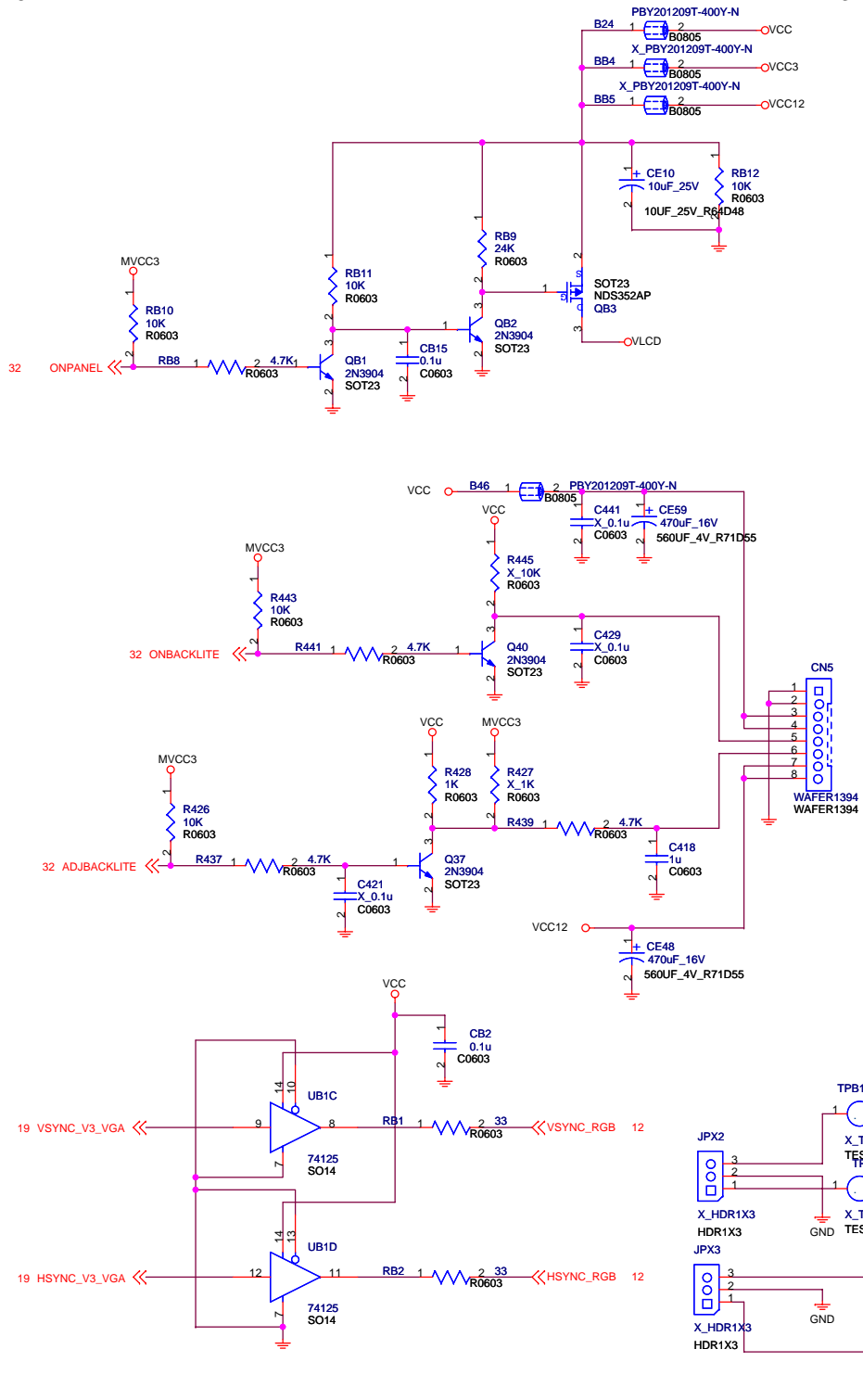


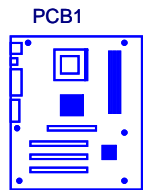
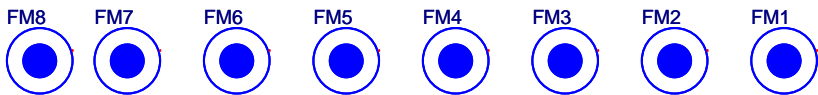




Title			
TRANSMITTER			
Size A3	Document Number	Rev S	
LCD-PC945			
Date:	Monday, April 30, 2007	Sheet	32 of 35







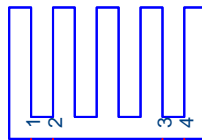
MS-7401,Ren



jp101  
PIN HEADER

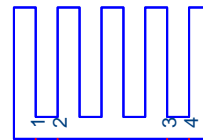


jp102  
PIN HEADER

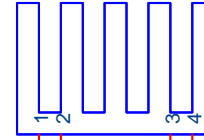


U28\_1

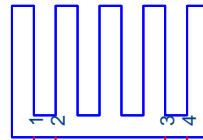
NB-HEAT SINK



U33\_1  
U33HEAT SINK



U39\_1  
U39HEAT SINK

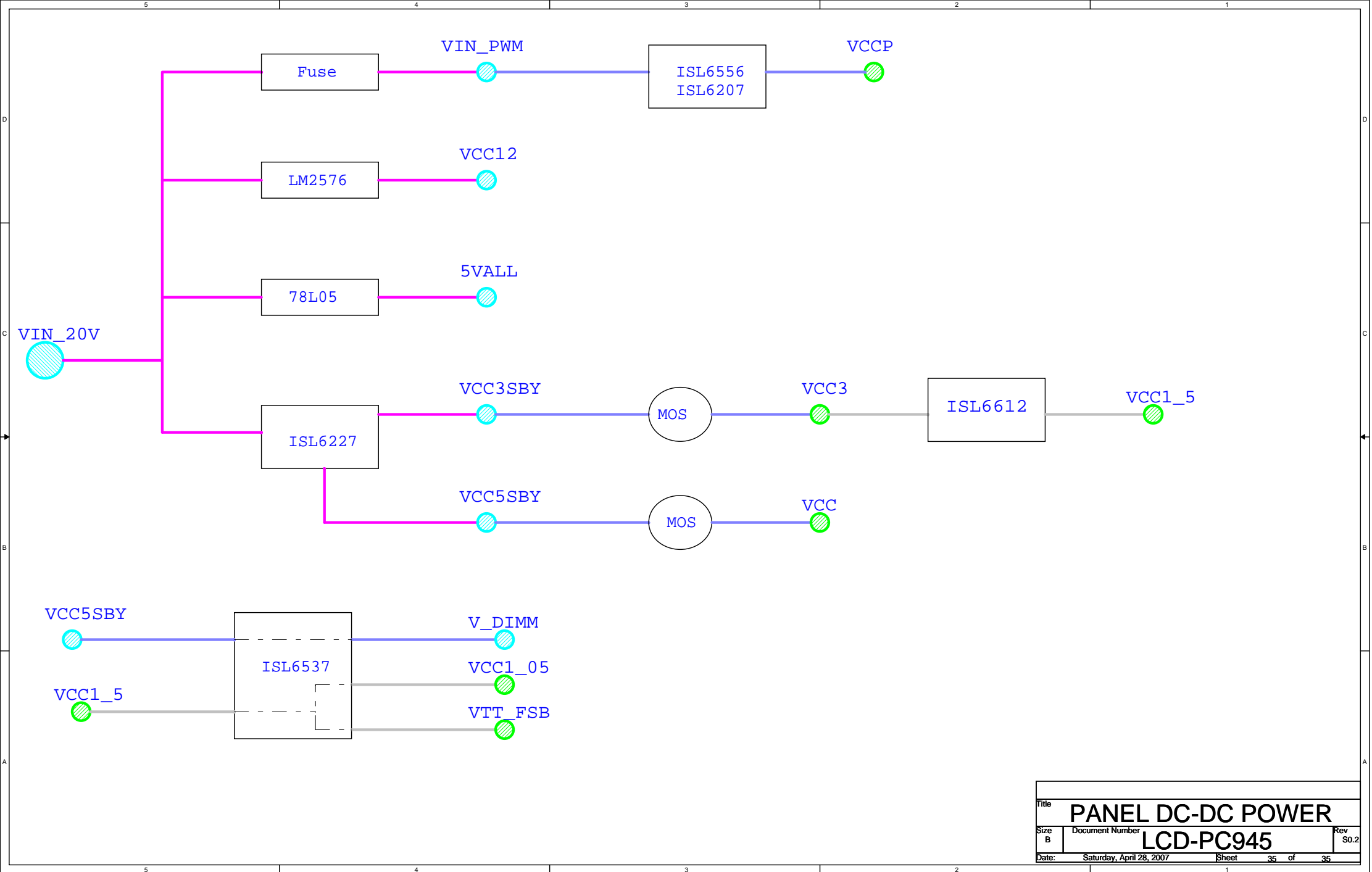


U16\_1  
U16HEAT SINK

footprint is HEATSINK68X18

footprint is HEATSINK68X18

Title			
<Title>			
Size	Document Number		Rev
A	<Doc>		<RevCode>
Date:	Monday, April 30, 2007		Sheet 34 of 35



Title				PANEL DC-DC POWER	
Size		Document Number			Rev
B		LCD-PC945			S0.2
Date:		Saturday, April 28, 2007		Sheet	35 of 35